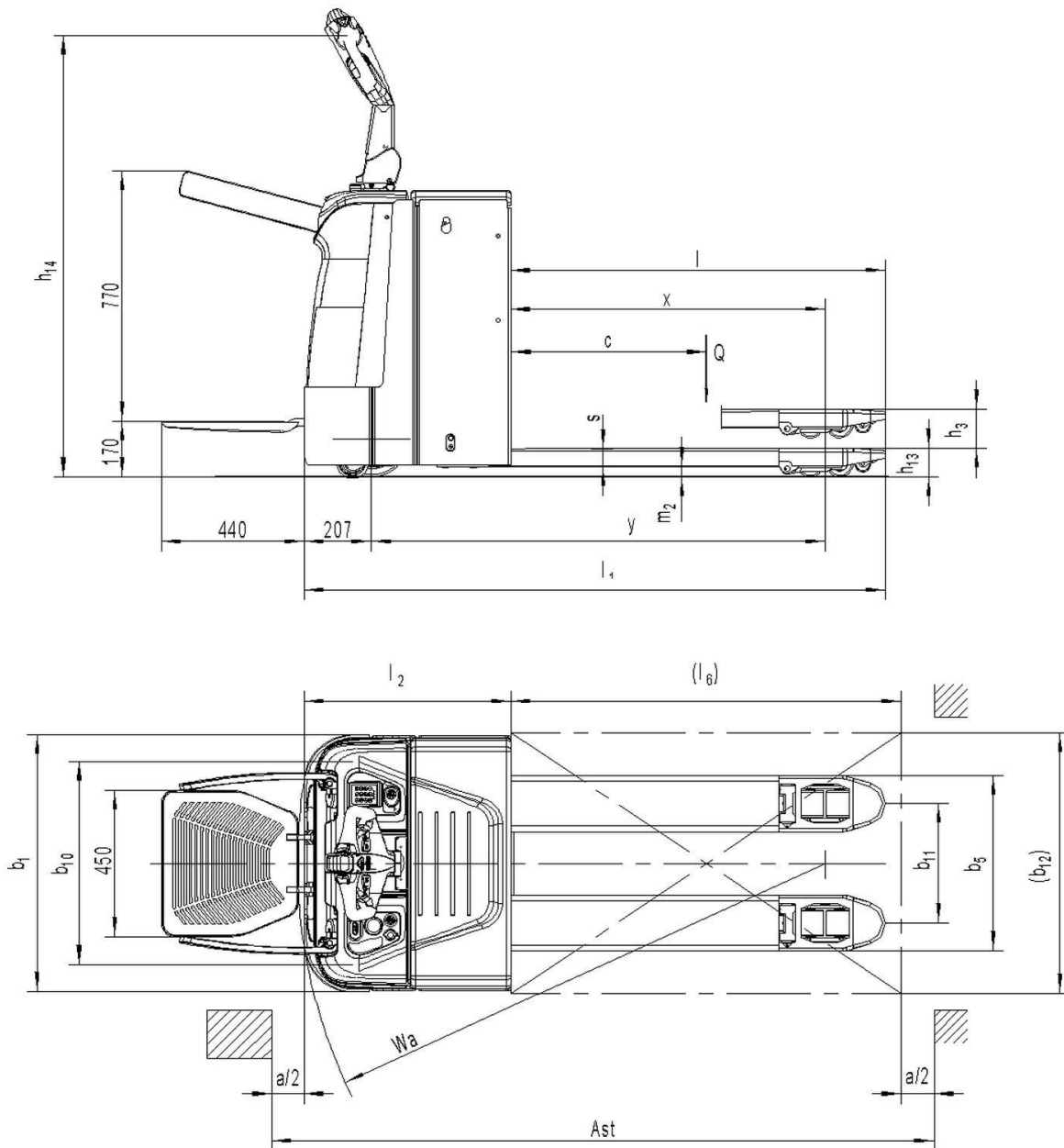


PT 20/25N



Type sheet for industrial truck acc. to VDI 2198					
Distinguishing mark	1.2	Manufacturer's type designation		PT 20N	PT 25N
	1.3	Power(battery,diesel,petrol gas,manual)		Battery	
	1.4	Operator type		Pedestrian/Stand	
	1.5	Load Capacity / rated load	Q (t)	2.0	2.5
	1.6	Load centre distance	c (mm)	600	600
	1.8	Load distance, centre of drive axle to fork	x(mm)	892 ¹⁾	892 ¹⁾
	1.9	Wheelbase	y (mm)	1330 ^{1) 2)}	1435 ¹⁾
Weight	2.1	Service weight	kg	620	770
	2.2	Axle loading, laden front/rear	kg	1110/1510	1370/1900
	2.3	Axle loading, unladen front/ rear	kg	500/120	610/160
Tires, chassis	3.1	Tires		Polyurethane (PU)	
	3.2	Tire size, front	∅ x w (mm)	230X70	
	3.3	Tire size, rear	∅ x w (mm)	84X84	
	3.4	Additional wheels (dimensions)	∅ x w (mm)	100x40	
	3.5	Wheels, number front/ rear(x=driven wheels)		1x+2/4	
	3.6	Tread, front	b ₁₀ (mm)	560	
	3.7	Tread, rear	b ₁₁ (mm)	367/512	
Dimensions	4.4	Lift height	h ₃ (mm)	120	
	4.9	Height of tiller in drive position min. / max.	h ₁₄ (mm)	950/1350	
	4.15	Height, lowered	h ₁₃ (mm)	85	
	4.19	Overall length	l ₁ (mm)	1790 ^{2) 3)}	1895
	4.20	Length to face of forks	l ₂ (mm)	640 ^{2) 3)}	745 ³⁾
	4.21	Overall width	b ₁ (mm)	790	
	4.22	Fork dimensions	s/e/l (mm)	55/173/1150	
	4.25	Distance between fork-arms	b ₅ (mm)	540/685	
	4.32	Ground clearance, centre of wheelbase	m ₂ (mm)	30	
	4.33	Aisle width for pallets 1000 x 1200 crossways	Ast(mm)	2400 ^{2) 3)}	2505 ³⁾
	4.34	Aisle width for pallets 1000X1200 lengthways	Ast(mm)	2290 ^{2) 3)}	2395 ³⁾
4.35	Turning radius	Wa (mm)	1585 ²⁾³⁾	1690 ³⁾	
Performance	5.1	Travel speed, laden/ unladen	km/h	7.5/8.0	6.0/7.0
	5.2	Lift speed, laden/ unladen	m/s	0.025/0.030	0.035/0.045
	5.3	Lowering speed, laden / unladen	m/s	0.030/0.025	0.045/0.050
	5.8	Gradeability, laden/ unladen	%	8/15	
	5.10	Service brake		Electromagnetic	
Motors	6.1	Drive motor rating S2 60min	kW	1.4	
	6.2	Lift motor rating at S3 10%	kW	0.8	2.2
	6.3	Battery acc. to DIN 43531 /35 / 36 A, B, C, no		/	/
	6.4	Battery voltage, nominal capacity K5	V/Ah	24/160-210	24/270-350
	6.5	Battery weight (minimum)	kg	155	235
	6.6	Energy consumption acc. to VDI cycle	KWh/h	0.55	1.65
	8.1	Type of drive control		AC -Speed Control	
	8.4	Sound level at driver's ear acc. to EN 12053	dB(A)	69	

1) Load section lowered:+65mm; 2) With side battery removal: + 30 mm; 3) With compact platform: + 440 mm