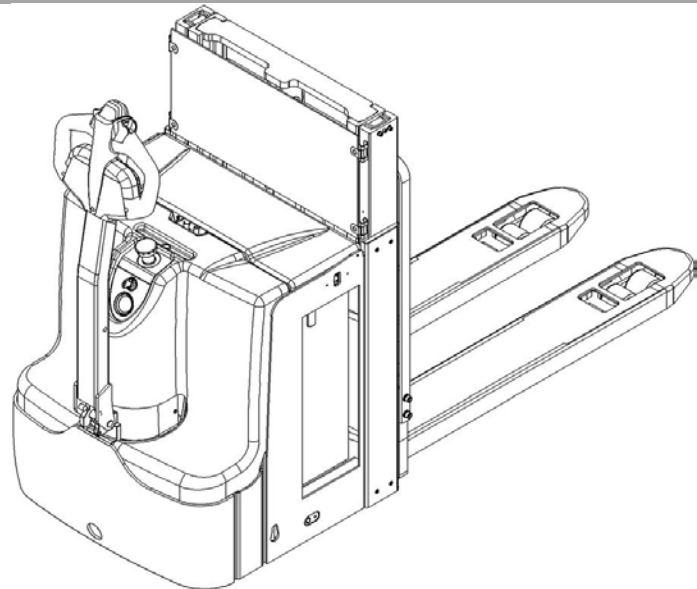
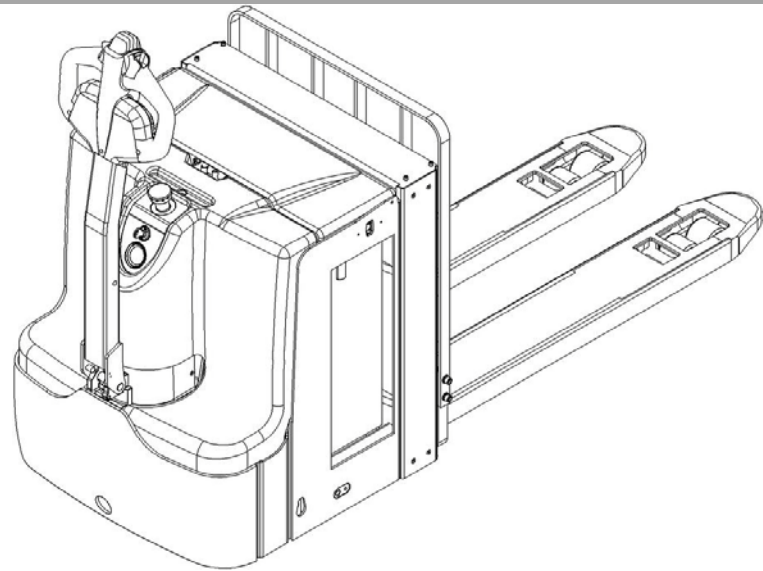


SPARE PARTS LIST

Electric Pallet Truck PT 20I/D(210Ah)



Catalogue

| | |
|--|----|
| Fig.1 Appearance | 3 |
| Fig.2 Chassis..... | 5 |
| Fig.3 Load roller assembly | 7 |
| Fig.4 Mast assembly PT20I | 9 |
| Fig.5 Mast assembly PT20D (1600/2000) | 11 |
| Fig.6 Mast assembly PT20D (2500) | 14 |
| Fig.7 Pallet frame assembly PT20I..... | 16 |
| Fig.8 Pallet frame assembly PT20D (1600/2000) | 18 |
| Fig.9 Pallet frame assembly PT20D (2500) | 19 |
| Fig.10 Load roller assembly..... | 20 |
| Fig.11 Truck body assembly..... | 22 |
| Fig.12 Battery components..... | 24 |
| Fig.13 Drive wheel assembly..... | 26 |
| Fig.14 Steering wheel assembly..... | 28 |
| Fig.15 Tiller assembly..... | 30 |
| Fig.16 Canbus tiller..... | 32 |
| Fig.17 PT 20I Hydraulic assembly | 34 |
| Fig.18 PT 20D Hydraulic assembly | 38 |
| Fig.19 Cylinder assembly (front)..... | 40 |
| Fig.20 PT 20I Cylinder assembly (rear)..... | 42 |
| Fig.21 PT 20D Cylinder assembly (rear1600/2000)..... | 44 |
| Fig.22 PT 20D Cylinder assembly (rear2500)..... | 46 |
| Fig.23 Pump 2.2KW | 48 |
| Fig.24 PT 20I Electrical assembly | 50 |
| Fig.25 PT 20D Electrical assembly (1600/2000) | 54 |
| Fig.26 PT 20D Electrical assembly (2500) | 58 |
| Fig.27 Electronic control components..... | 62 |
| Fig.28 Main wiring harness..... | 64 |
| Fig.29 PT 20I stickers (EU)..... | 66 |

| | |
|----------------------------------|----|
| Fig.30 PT 20I stickers (US)..... | 68 |
| Fig.31 PT 20D stickers (EU)..... | 70 |
| Fig.32 PT 20D stickers (US)..... | 71 |
| Easy Worn Parts..... | 72 |

Fig.1 Appearance

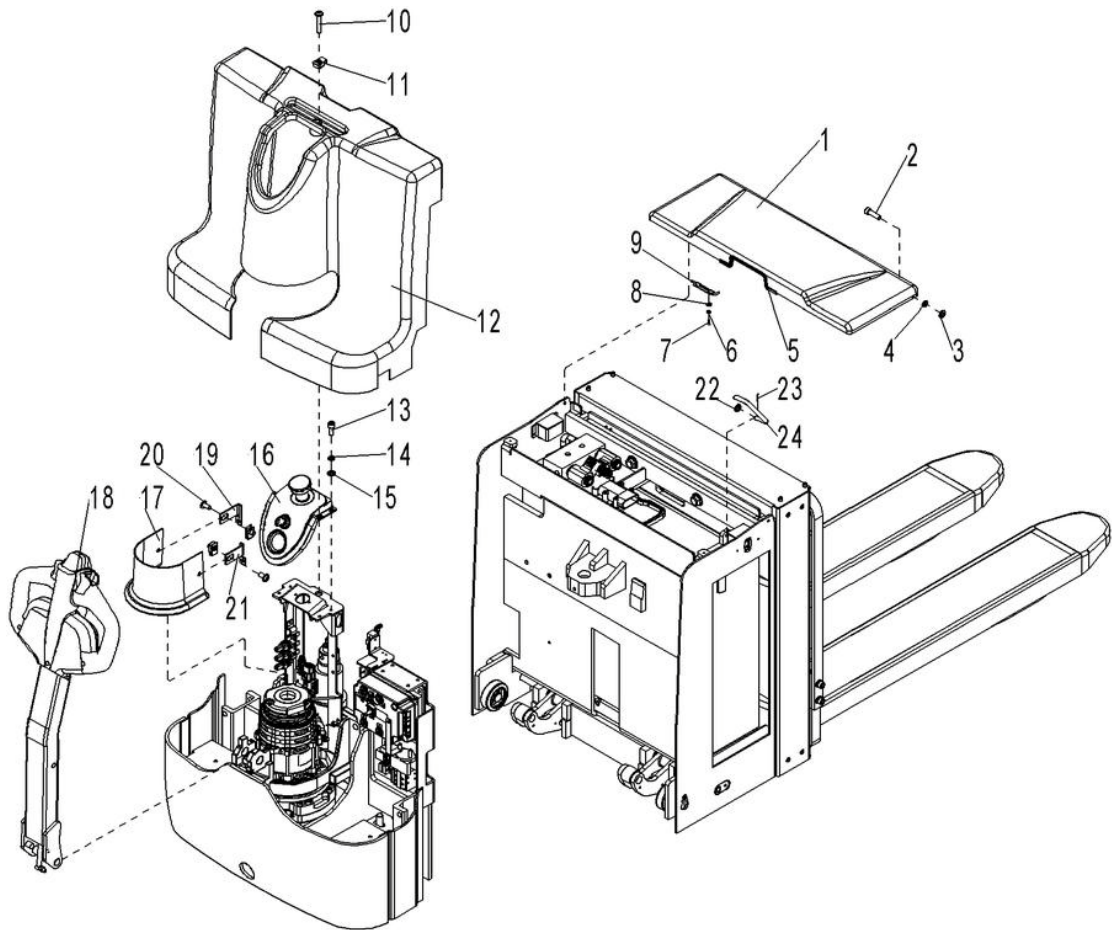


Fig.1 Appearance

| No. | Art No. | Description | Qty. | Note |
|-----|------------|----------------------------------|------|--------|
| 1 | 9000017898 | Battery cover welding (210Ah) | 1 | |
| 2 | 0000023306 | Screw | 1 | M5x20 |
| 3 | 0000025014 | Flat washer | 1 | 5 |
| 4 | 0000025015 | Washer | 1 | 5 |
| 5 | 9000008339 | Seal strip | 1 | |
| 6 | 0000025018 | Washer | 2 | 4 |
| 7 | 0000023073 | Screw M4x10 | 2 | |
| 8 | 0000025019 | Flat washer 4 | 2 | |
| 9 | 9000008795 | Bolt CL037 | 1 | |
| 10 | 9000007792 | Screw | 1 | M10X45 |
| 11 | 9000007783 | Nut | 3 | |
| 12 | 9000010662 | Electrical box main cover | 1 | |
| 13 | 0000023040 | Screw | 4 | M6x16 |
| 14 | 0000025010 | Washer | 4 | 6 |
| 15 | 0000023055 | Flat washer | 4 | 6 |
| 16 | 9000010663 | Indicator cover | 1 | |
| 17 | 9000010664 | Motor main cover | 1 | |
| 18 | 9000010665 | Tiller operation assembly | 1 | |
| 19 | 9000011593 | Motor cover left assembly plate | 1 | |
| 20 | 1000423001 | Screw | 2 | M10X20 |
| 21 | 9000011594 | Motor cover right assembly plate | 1 | |

Fig.2 Chassis

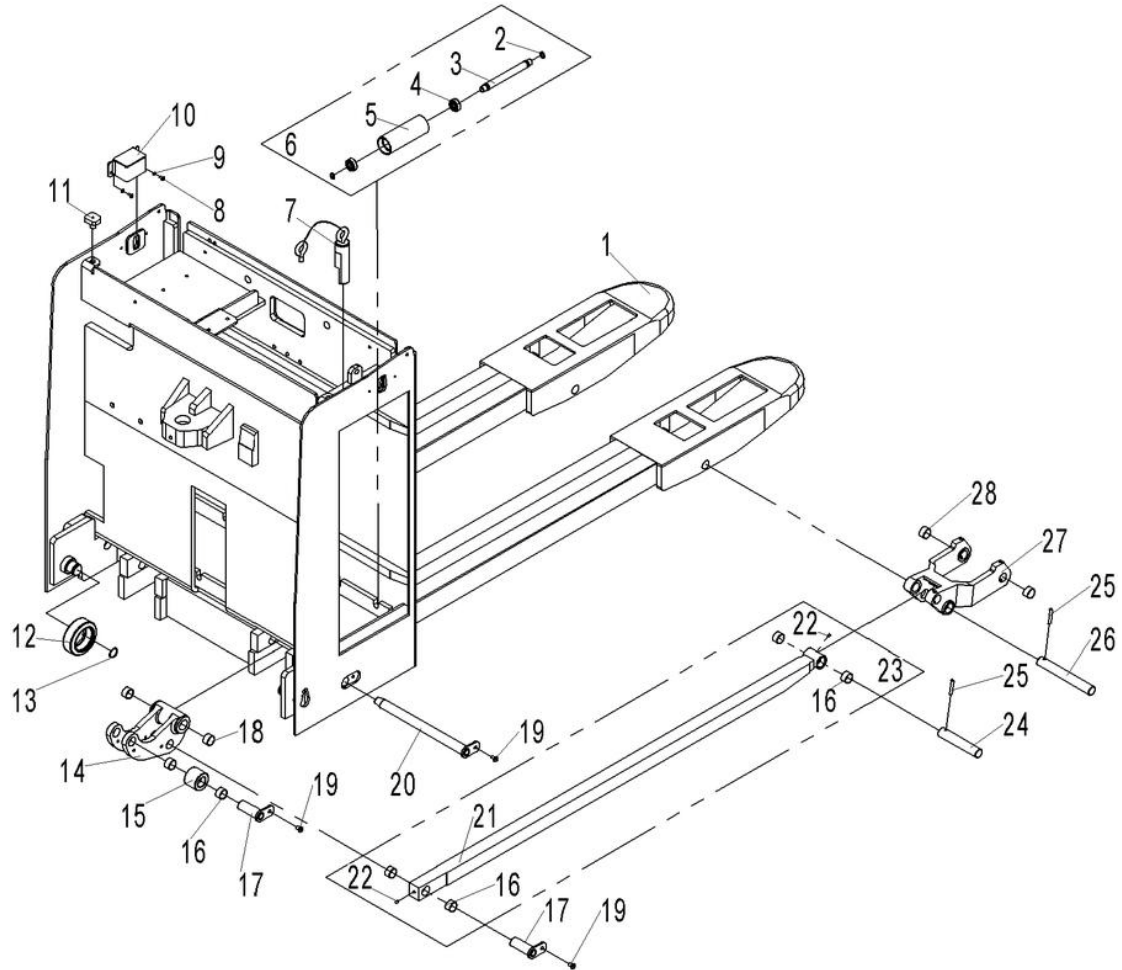


Fig.2 Chassis

| No. | Art No. | Description | Qty. | Note |
|-----|------------|-------------------------|------|-------|
| 1 | 9000017885 | Chassis assembly | 1 | 210 |
| 2 | 0000026004 | Circlip | 12 | 15 |
| 3 | 9000011591 | Axle | 6 | |
| 4 | 0000027060 | Bearing | 12 | 6202 |
| 5 | 9000011592 | Barrel | 6 | |
| 6 | 9000011590 | roller components | 6 | |
| 7 | 9000017877 | Lock axle components | 1 | |
| 8 | 0000023071 | Screw | 4 | M4x8 |
| 9 | 0000025018 | Washer | 4 | 4 |
| 10 | 9000017887 | Switch cover | 2 | |
| 11 | 9000008340 | Anti vibration rubber | 2 | |
| 12 | 9000008153 | Main roller 76x25x23 | 2 | |
| 13 | 0000026013 | Circlip | 2 | 25 |
| 14 | 9000011729 | Big rib plate | 2 | |
| 15 | 9000008631 | Roller | 2 | |
| 16 | 0000027005 | Bushing 20X22X12 | 16 | |
| 17 | 9000008465 | Fixed axle welding | 4 | |
| 18 | 1000413001 | Bushing 20X23X15 | 4 | |
| 19 | 1000523002 | Screw | 6 | M6X14 |
| 20 | 9000017888 | Fixed axle assembly | 2 | |
| 21 | 9000017886 | Push rod welding | 2 | |
| 22 | 0000030001 | Grease nipple | 8 | 6 |
| 23 | 9000017909 | Push rod parts | 2 | |
| 24 | 9000011727 | Push rod axle | 2 | |
| 25 | 0000028009 | Elastic cylindrical pin | 4 | 5x35 |
| 26 | 9000011725 | Lever block axle | 2 | |
| 27 | 9000011726 | Lever block | 2 | |
| 28 | 0000013002 | Bushing 20X22X12 | 4 | |

Fig.3 Load roller assembly

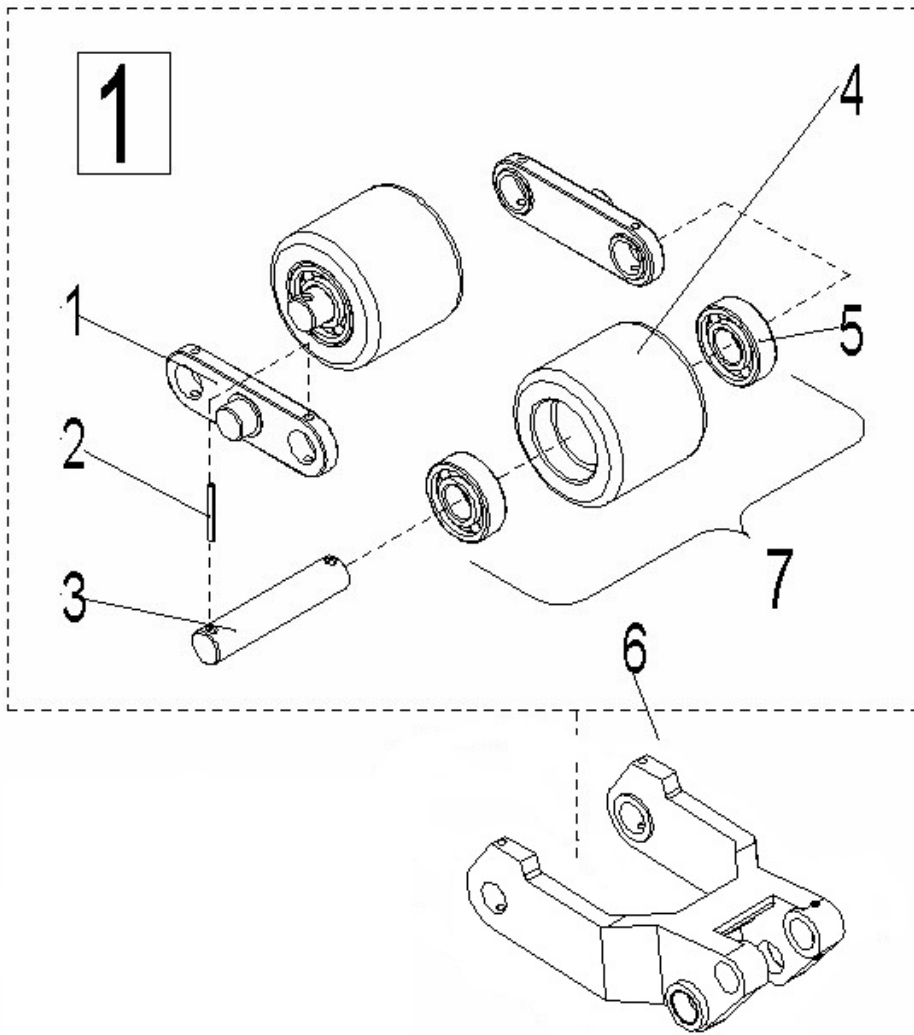


Fig.3 Load Roller Assembly

| No. | Art No. | Description | Qty. | Note |
|-----|------------|-------------------------|------|-------|
| 1 | 9000008513 | Linking plate | 2 | |
| 2 | 0000028055 | Elastic cylindrical pin | 4 | 5x40 |
| 3 | 9000011732 | Axle | 2 | |
| 4 | 2000416002 | Load roller | 2 | 80x70 |
| 5 | 0000027001 | Bearing | 4 | 6204 |
| 6 | 0000030001 | Grease nipple | 2 | 6 |
| 7 | 9000010398 | Wheel set | 2 | |
| ① | 9000011733 | Load roller assembly | 2 | |

Fig.4 Mast assembly PT20I

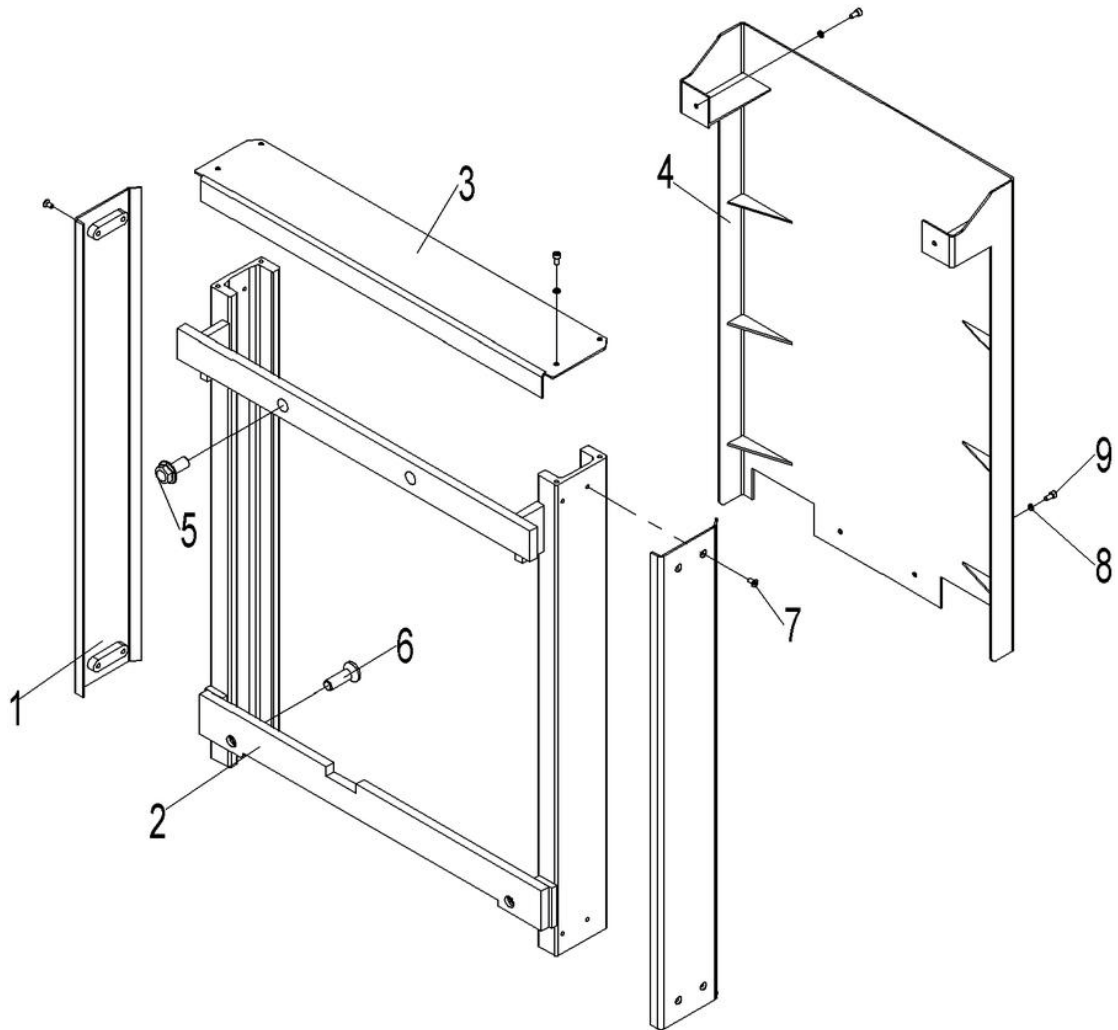


Fig.4 Mast Assembly

| No. | Art No. | Description | Qty. | Note |
|-----|------------|---------------------|------|----------|
| 1 | 9000017890 | Side plate welding | 2 | |
| 2 | 9000017891 | Mast assembly | 1 | |
| 3 | 9000017857 | Cover plate | 1 | |
| 4 | 9000017892 | Seal plate assembly | 1 | |
| 5 | 0090000658 | Bolt | 2 | M16x35 |
| 6 | 2210423001 | Screw | 2 | (M16X52) |
| 7 | 0000023864 | Screw | 8 | M6x17 |
| 8 | 0000025010 | Washer | 8 | 6 |
| 9 | 0000023042 | Screw | 8 | M6x10 |

Fig.5 Mast assembly PT20D (1600/2000)

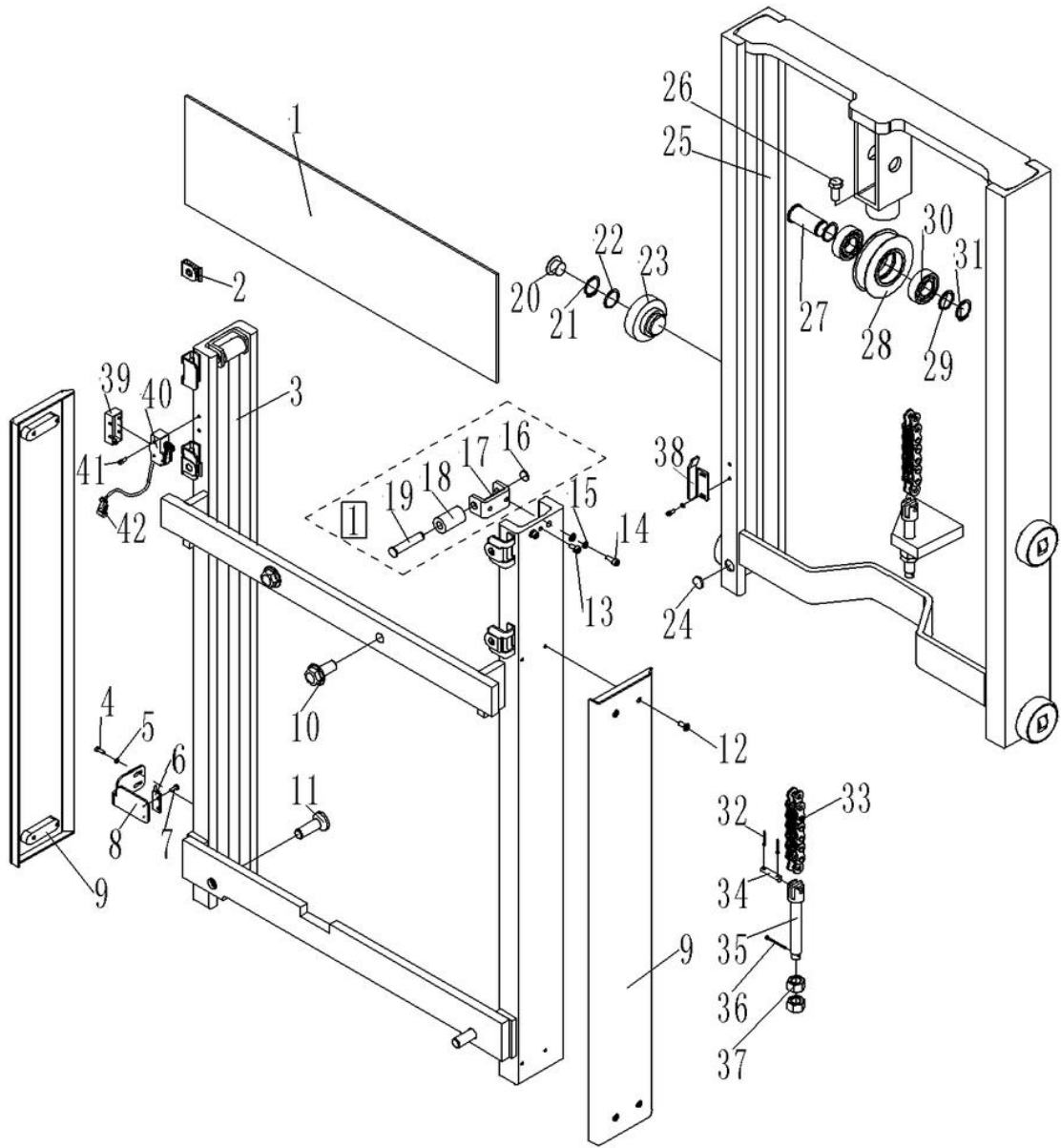


Fig.5 Mast Assembly PT20D (1600/2000)

| No. | Art No. | Description | Qty. | Note |
|-----|------------|--------------------------------|------|--------|
| 1 | 9000018217 | Protective glass(1600) | 1 | |
| 2 | 9000007782 | Spring buckle (thickness 1) | 4 | |
| 3 | 9000018257 | Mast welding | 1 | |
| | 9000018232 | Mast welding | 1 | |
| 4 | 0000023073 | Screw | 4 | M4x10 |
| 5 | 0000025009 | Washer | 1 | 4 |
| 6 | 9000008332 | Magnetic switch HWK23 | 1 | |
| 7 | 0000023216 | Screw | 2 | M3x8 |
| 8 | 9000009121 | Magnetic switch holder | 4 | |
| 9 | 9000018255 | Side plate assembly | 2 | |
| 10 | 0090000658 | Bolt | 2 | M16x35 |
| 11 | 2210423001 | Screw | 2 | M16X52 |
| 12 | 0000023864 | Screw | 8 | M6x17 |
| 13 | 0000023089 | Screw | 2 | M8x12 |
| 14 | 0000023089 | Screw | 4 | M8x16 |
| 15 | 0000025001 | Washer | 4 | 8 |
| 16 | 0090000626 | Circlip | 2 | 12 |
| 17 | 2530504007 | Wheel seat | 2 | |
| 18 | 2500511002 | Guide wheel | 2 | |
| 19 | 2500507003 | Short axle | 2 | |
| 20 | 2500502003 | Side cushion block | 4 | |
| 21 | 2500525001 | Washer | 4 | |
| 22 | 0000026013 | Circlip | 4 | |
| 23 | 2530402002 | Roller | 4 | |
| 24 | 2000435002 | Magnet steel | 1 | |
| 25 | 9000018256 | Mast welding | 1 | |
| | 9000018233 | Mast welding | 1 | |
| 26 | 0000023226 | Bolt | 1 | M12x25 |
| 27 | 3028002008 | Chain wheel axle | 1 | |
| 28 | 3028002007 | Chain wheel | 1 | |
| 29 | 2240302001 | Adjusting washer (thickness 2) | 2 | |

| | | | | |
|----|------------|--------------------------------|---|--------------|
| 30 | 0000027011 | Bearing 6205 | 2 | |
| 31 | 0000026013 | Circlip | 1 | 25 |
| 32 | 0000028010 | Split pin | 2 | 2x20 |
| 33 | 0090000586 | Chain LH1044x71 | 1 | |
| | 0000029136 | Chain LH1044x85 | 1 | |
| 34 | 0090000441 | Short axle 6x28 | 1 | |
| 35 | 9000008177 | Chain pull rod | 1 | |
| 36 | 0000028070 | Split pin | 1 | 4x40 |
| 37 | 0090000442 | Nut | 2 | M16x1.5 |
| 38 | 9000018218 | Mounting plate(limit) | 1 | |
| 39 | 2040603002 | Micro switch protective cover | 1 | |
| 40 | 9000000794 | Micro switch | 1 | RZ-15GW2S-B3 |
| 41 | 0000023041 | Screw | 2 | M4x30 |
| 42 | 9000017648 | Limit control wiring harness 2 | 1 | |
| | 9000018421 | Limit control wiring harness 2 | 1 | |
| ① | 2530500002 | Guide wheel | 2 | |

Fig.6 Mast assembly PT20D (2500)

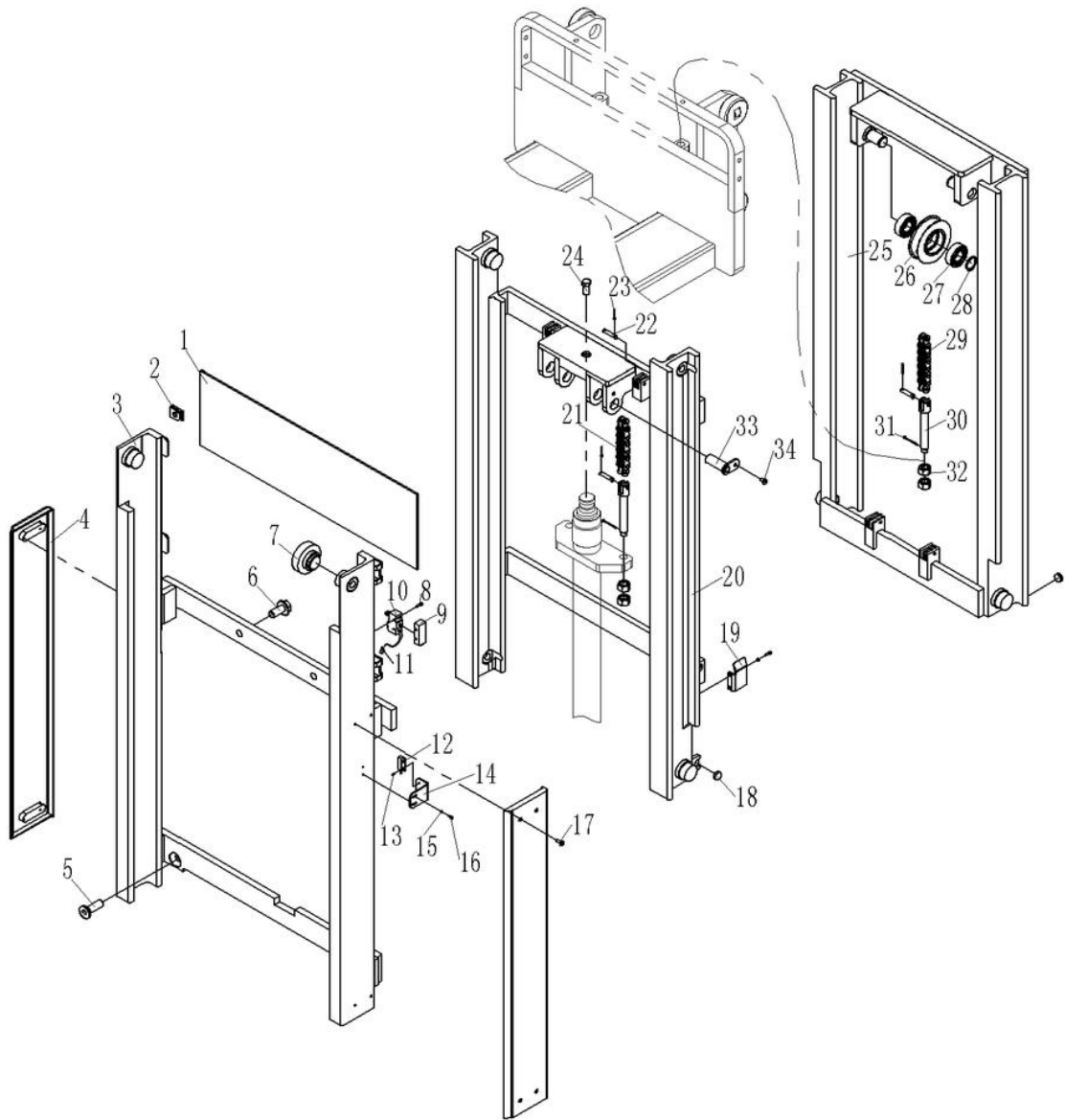


Fig.6 Mast assembly PT20D (2500)

| No. | Art No. | Description | Qty. | Note |
|-----|------------|-----------------------------|------|------|
| 1 | 9000018399 | Protective glass | 1 | |
| 2 | 9000007782 | Spring buckle (thickness 1) | 4 | |
| 3 | 9000018400 | Mast welding | 1 | |
| 4 | 9000018255 | Side plate assembly | 2 | |

| | | | | |
|----|------------|-------------------------------|---|--------------|
| 5 | 2210423001 | Screw | 2 | M16X52 |
| 6 | 0090000658 | Bolt | 2 | M16x35 |
| 7 | 2240611001 | Compound roller 1 | 8 | |
| 8 | 0000023041 | Screw | 2 | M4x30 |
| 9 | 2040603002 | Micro switch protective cover | 1 | |
| 10 | 9000000794 | Micro switch | 1 | RZ-15GW2S-B3 |
| 11 | 9000018417 | Limit control wiring harness | 1 | |
| 12 | 9000008332 | Magnetic switch HWK23 | 1 | |
| 13 | 0000023216 | Screw | 2 | M3x8 |
| 14 | 9000018401 | Magnetic switch holder | 1 | |
| 15 | 0000025009 | Washer | 4 | 4 |
| 16 | 0000023073 | Screw | 4 | M4x10 |
| 17 | 0000023864 | Screw | 8 | M6x17 |
| 18 | 2000435002 | Magnet steel | 1 | |
| 19 | 9000018402 | Limit plate | 1 | |
| 20 | 9000018403 | Mast welding | 1 | |
| 21 | 0000029258 | Chain LH1044x69 | 2 | |
| 22 | 0090000441 | Short axle | 8 | 6x28 |
| 23 | 0000028010 | Split pin | 8 | 2x20 |
| 24 | 0000023226 | Bolt | 1 | M12x25 |
| 25 | 9000018404 | Mast welding | 1 | |
| 26 | 9000018405 | Chain wheel | 4 | |
| 27 | 0000027011 | Bearing | 8 | 6205 |
| 28 | 0000026013 | Circlip | 4 | 25 |
| 29 | 0090000586 | Chain LH1044x71 | 2 | |
| 30 | 9000008177 | Chain pull rod | 4 | |
| 31 | 0000028070 | Split pin | 4 | 4x40 |
| 32 | 0000024042 | Nut | 8 | M16x1.5 |
| 33 | 9000018406 | Axle 25x63 | 2 | |
| 34 | 0000023103 | Screw | 2 | M6x8 |

Fig.7 Pallet frame assembly PT20I

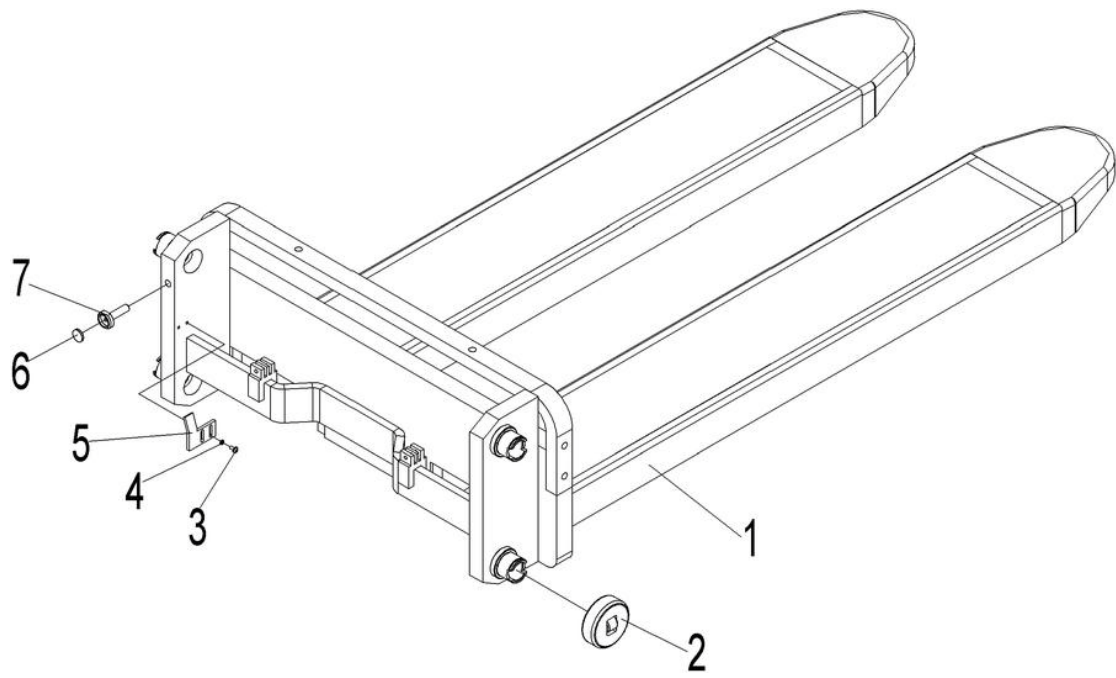


Fig.7 Pallet Frame Assembly PT20I

| No. | Art No. | Description | Qty. | Note |
|-----|------------|---------------------|------|------|
| 1 | 9000017889 | Fork frame assembly | 1 | 210 |
| 2 | 2210511001 | Compound roller | 4 | |
| 3 | 0000023071 | Screw | 2 | M4x8 |
| 4 | 0000025018 | Washer | 2 | 4 |
| 5 | 9000017805 | Baffle (limit) | 1 | |
| 6 | 2000435002 | Magnet steel | 1 | |
| 7 | 9000008079 | Magnet steel seat | 1 | |
| 8 | 0000024012 | Nut | 1 | M10 |

Fig.8 Pallet frame assembly PT20D (1600/2000)

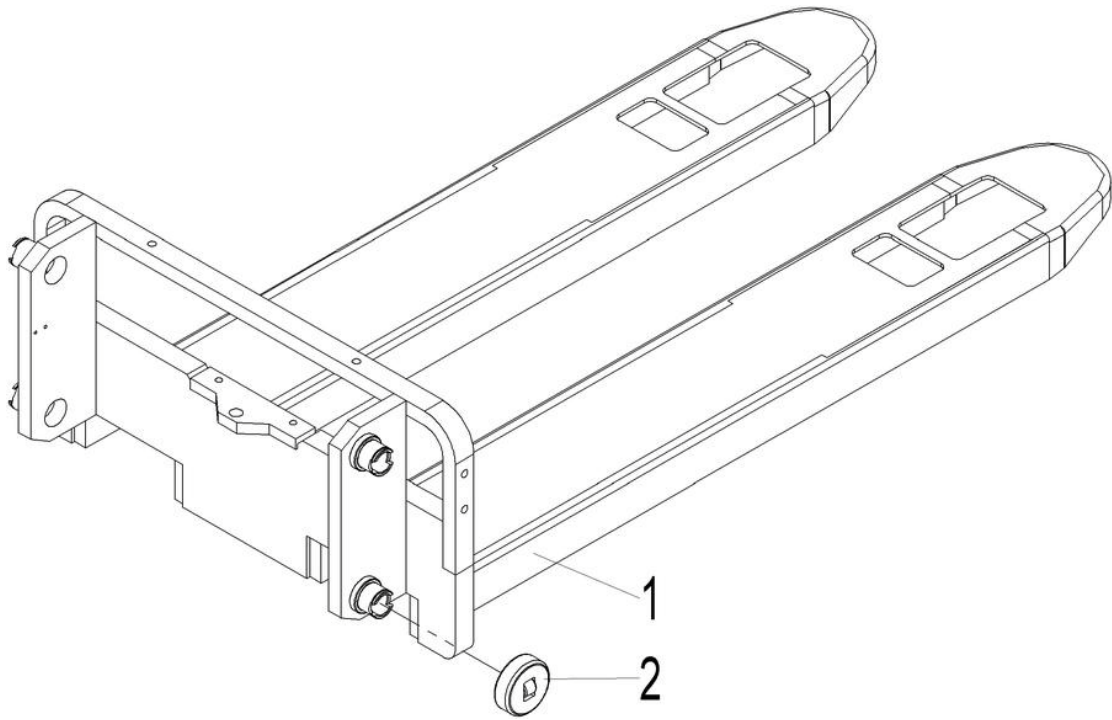


Fig.8 Pallet Frame Assembly PT20D (1600/2000)

| No. | Art No. | Description | Qty. | Note |
|-----|------------|---------------------|------|------|
| 1 | 9000018231 | Fork frame assembly | 1 | 210 |
| 2 | 2210511001 | Compound roller | 4 | |

Fig.9 Pallet frame assembly PT20D (2500)

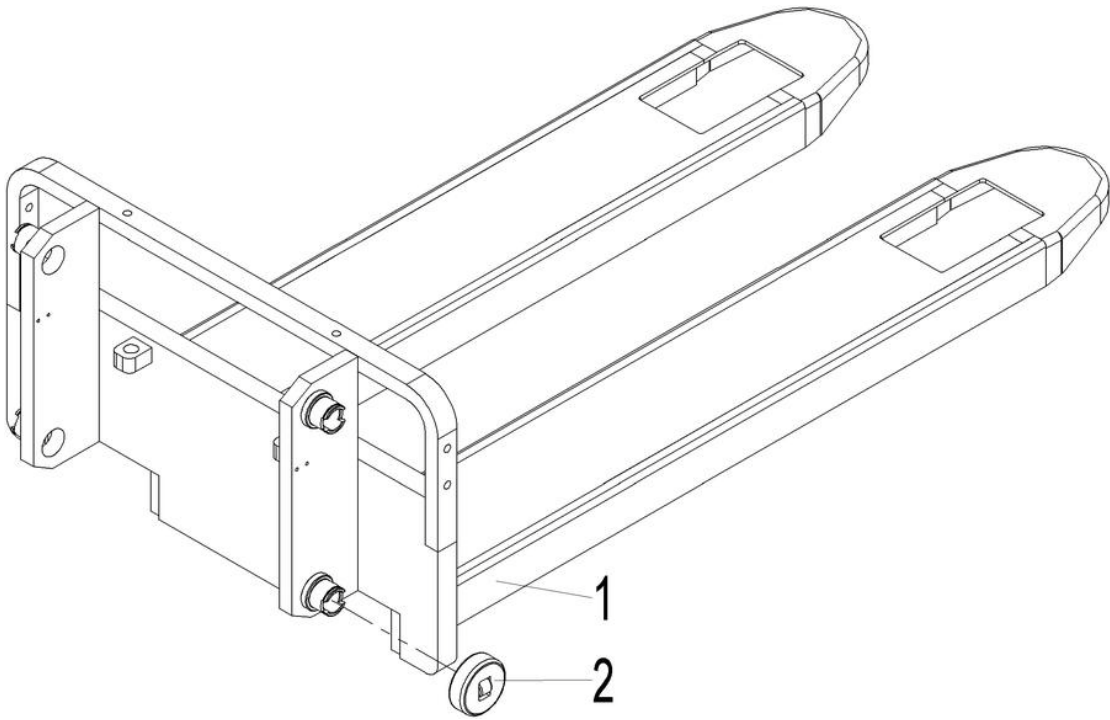


Fig.9 Pallet Frame Assembly PT20D (2500)

| No. | Art No. | Description | Qty. | Note |
|-----|------------|---------------------|------|------|
| 1 | 9000018407 | Fork frame assembly | 1 | |
| 2 | 2210511001 | Compound roller | 4 | |

Fig.10 Load Backrest Assembly

| No. | Art No. | Description | Qty. | Note |
|-----|------------|-----------------------|------|--------|
| 1 | 9000017897 | Load backrest welding | 1 | 210 |
| 2 | 0000025002 | Flat washer | 4 | 10 |
| 3 | 0000023088 | Screw | 2 | M10x25 |
| 4 | 0000023006 | Washer | 4 | 10 |
| 5 | 0000023029 | Screw | 2 | M10x35 |

Fig.11 Truck body assembly

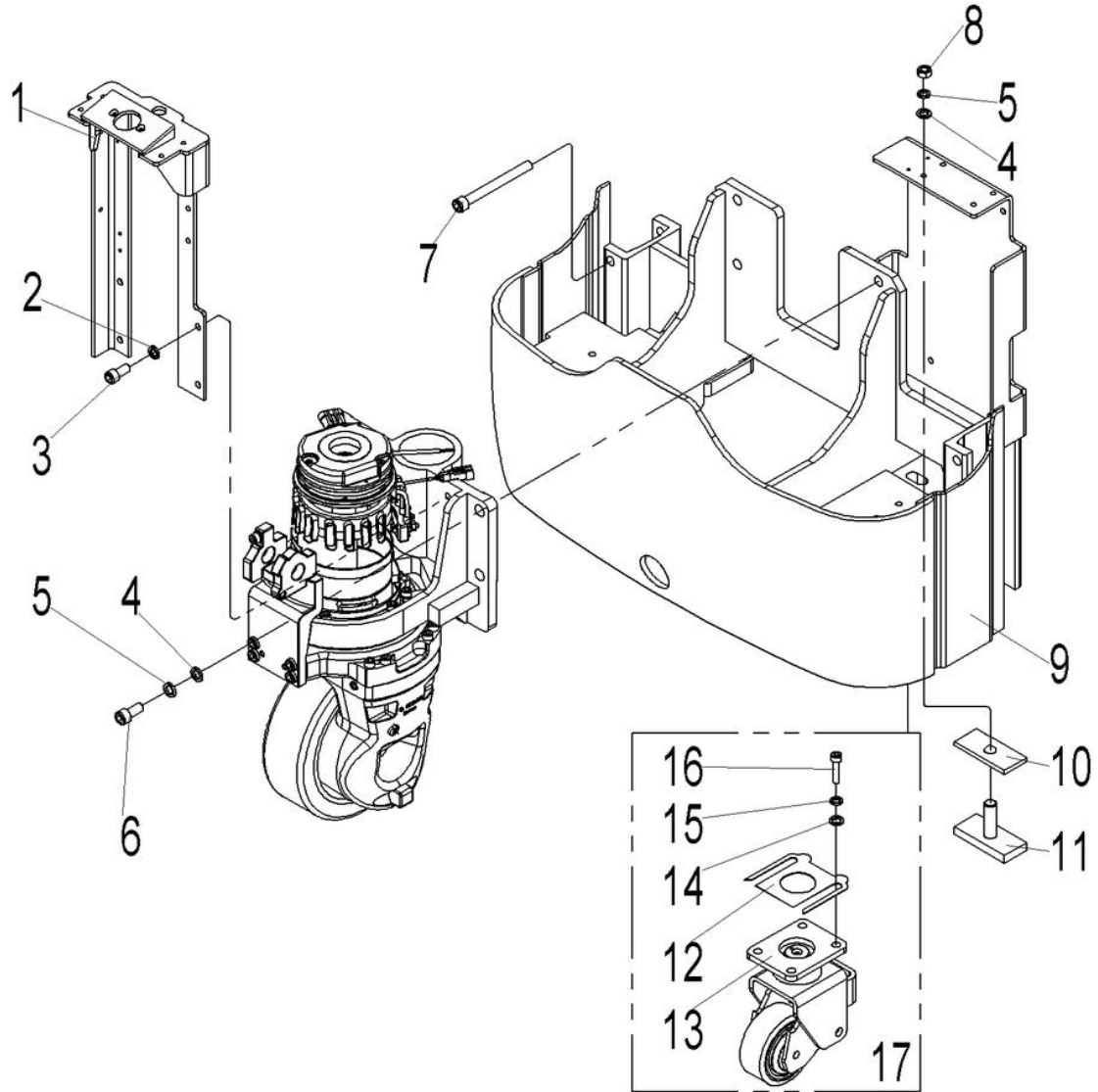


Fig.11 Truck Body Assembly

| No. | Art No. | Description | Qty. | Note |
|-----|------------|--------------------------------|---------|---------|
| 1 | 9000017894 | Instrument seat | 1 | |
| 2 | 0000025001 | Washer | 4 | 8 |
| 3 | 0000023067 | Screw | 4 | M8x16 |
| 4 | 0000025089 | Washer | 6 | 16 |
| 5 | 0000025059 | Washer | 6 | 16 |
| 6 | 0000023583 | Bolt | 4 | M16x45 |
| 7 | 0000023336 | Bolt | 2 | M12x100 |
| 8 | 0000025089 | Washer | 2 | 16 |
| 9 | 9000017893 | Truck body assembly (560x1150) | 1 | |
| 10 | 9000011721 | Base plate | N | |
| 11 | 9000011720 | Adjusting block welding | 2 | |
| 12 | 1000404031 | Adjusting pad | several | 1mm |
| | 1000404032 | Adjusting pad | | 0.5mm |
| 13 | 9000010716 | Steering wheel components | 2 | |
| 14 | 0000025002 | Flat washer | 8 | 10 |
| 15 | 0000023006 | Washer | 8 | 10 |
| 16 | 0000023025 | Screw | 8 | M10x40 |
| 17 | 9000011777 | Steering wheel assembly | 2 | |

Fig.12 Battery components

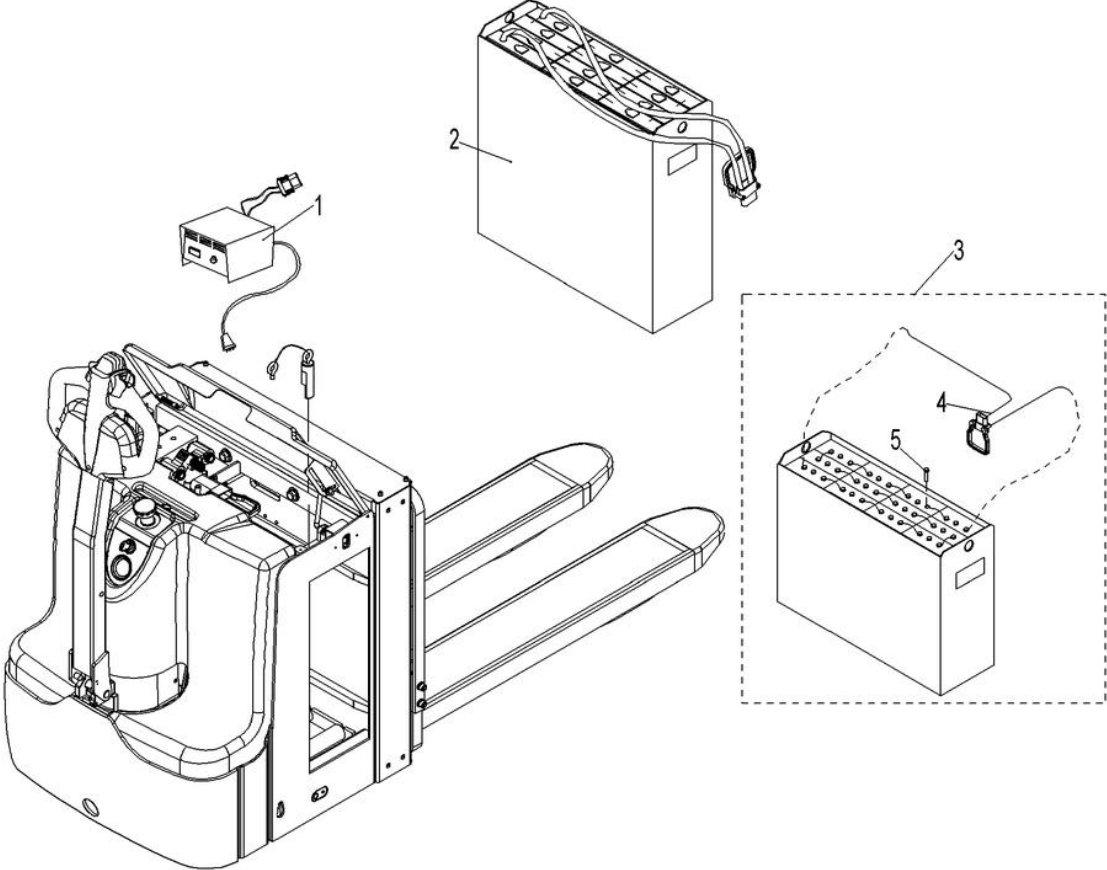


Fig.12 Battery Components

| No. | Art No. | Description | Qty. | Note |
|-----|------------|---------------------------|------|----------------------------|
| 1 | 9000010116 | Charger (Asia in Chinese) | 1 | 24V/30A |
| | 9000010117 | Charger (Asia in English) | 1 | 24V/30A |
| | 9000010118 | Charger (EU) | 1 | 24V/30A |
| | 9000010120 | Charger (AUS) | 1 | 24V/30A |
| | 9000010121 | Charger (UK) | 1 | 24V/30A |
| | 9000010146 | Charger (US) | 1 | 24V/30A |
| 2 | 9000017911 | Power supply assembly | 1 | Weld |
| 3 | 9000017905 | Power supply assembly | 1 | Bolt |
| 4 | 9000017910 | Plug | 1 | Only for bolt type battery |
| 5 | 9000009832 | Screw | 24 | Only for bolt type battery |

Fig.13 Drive wheel assembly

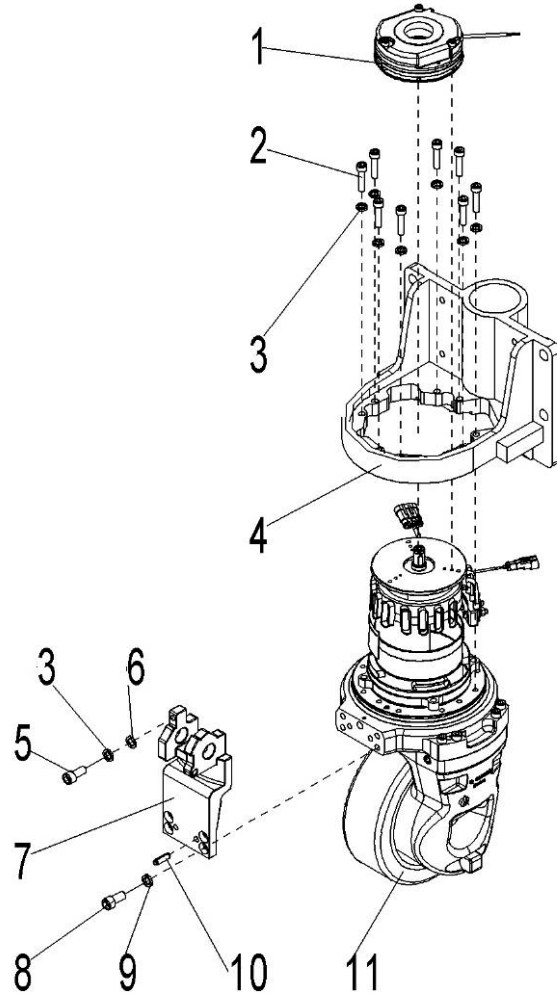


Fig.13 Drive Wheel Assembly

| No. | Art No. | Description | Qty. | Note |
|-----|------------|---------------------------------|------|--------|
| 1 | 9000011340 | Electromagnetic brake | 1 | |
| 2 | 0000023455 | Screw | 8 | M8x35 |
| 3 | 0000025001 | Washer | 8 | 8 |
| 4 | 9000010933 | Drive wheel seat | 1 | |
| 5 | 0000023067 | Screw | 1 | M8x16 |
| 6 | 0000025124 | Washer | 1 | 8 |
| 7 | 9000010691 | Tiller seat | 1 | |
| 8 | 0000023034 | Screw | 4 | M10x20 |
| 9 | 0000023006 | Washer | 4 | 10 |
| 10 | 0000028116 | Elastic cylindrical pin | 2 | 8x26 |
| 11 | 9000010249 | AC vertical type drive assembly | 1 | |

Fig.14 Steering wheel assembly

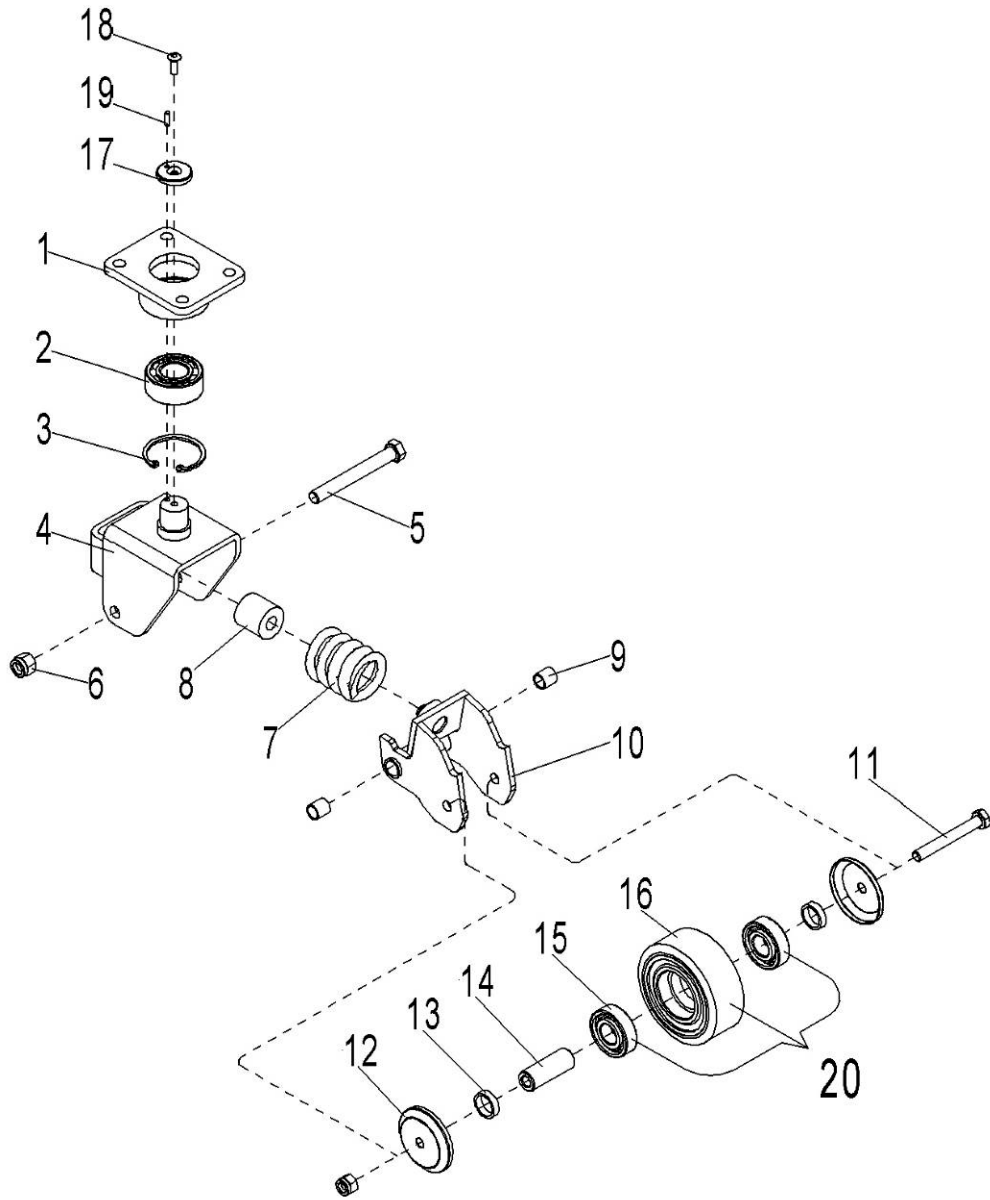


Fig.14 Steering Wheel Assembly

| No. | Art No. | Description | Qty. | Note |
|-----|------------|----------------------|------|---------------|
| 1 | 9000011774 | Linking Plate | 2 | |
| 2 | 0000027002 | Bearing | 2 | 3056205 |
| 3 | 0000026002 | Circlip | 2 | 52 |
| 4 | 1000401006 | Wheel frame assembly | 2 | |
| 5 | 1000423004 | Screw | 2 | M12×100 |
| 6 | 0000024006 | Nut | 2 | M12 |
| 7 | 1000431001 | Press spring | 2 | □ 9 length 62 |
| 8 | 1000419001 | PU spring | 2 | |
| 9 | 1000413002 | Bushing | 4 | 12×15×15 |
| 10 | 1000401008 | Rotating arm | 2 | |
| 11 | 0000023035 | Bolt | 2 | M10×80 |
| 12 | 1000404023 | Dust cover | 4 | |
| 13 | 1000425003 | Washer | 4 | |
| 14 | 1000402005 | Bushing | 2 | |
| 15 | 0000027001 | Bearing | 4 | 6204 |
| 16 | 1000403008 | Balance wheel | 2 | 100×40 |
| 17 | 1000426001 | Circlip | 2 | |
| 18 | 1000523002 | Screw | 2 | M6×14 |
| 19 | 0000028004 | Cylindrical pin | 2 | 4×14 |
| 20 | 9000008903 | Wheel set kits | 2 | |

Fig.15 Tiller assembly

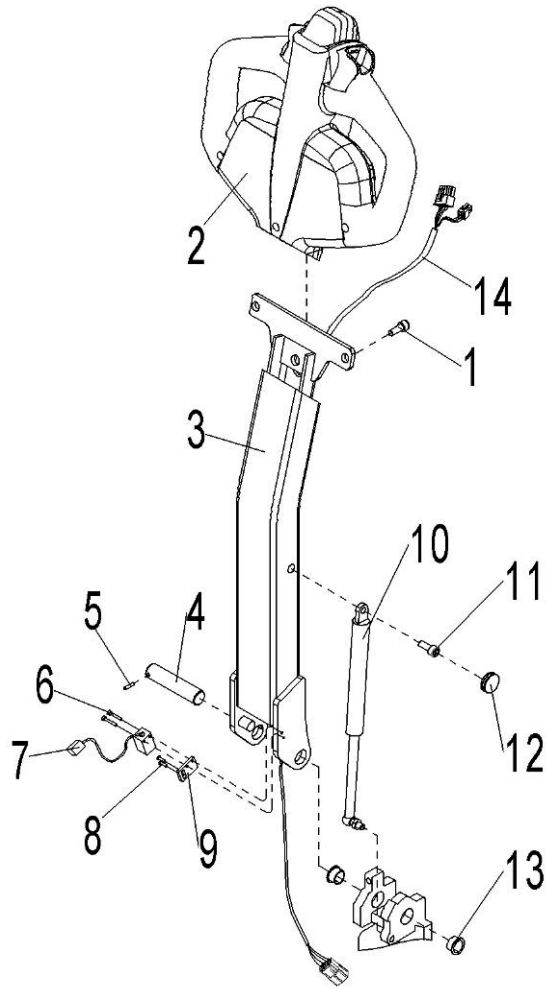


Fig.15 Tiller Assembly

| No. | Art No. | Description | Qty. | Note |
|-----|------------|-------------------------------|------|----------|
| 1 | 0000023047 | Screw | 2 | M8x25 |
| 2 | 1100100001 | Canbus control tiller C | 1 | 94300-90 |
| 3 | 9000010693 | Tiller arm assembly | 1 | |
| 4 | 9000010694 | Rotating axle | 1 | |
| 5 | 0000028024 | Elastic cylindrical pin | 1 | 4X16 |
| 6 | 0000023075 | Screw | 2 | M3x20 |
| 7 | 900000832 | 9 interlock switch | 1 | |
| 8 | 0000023056 | Screw | 2 | M4x12 |
| 9 | 9000010695 | Switch base plate | 1 | |
| 10 | 9000011289 | Air spring | 1 | |
| 11 | 0000023044 | Screw | 1 | M8x20 |
| 12 | 9000010696 | Seal bushing | 1 | |
| 13 | 0000013002 | Bushing | 2 | 20X22X12 |
| 14 | 9000010650 | Tiller control wiring harness | 1 | |

Fig.16 Canbus tiller

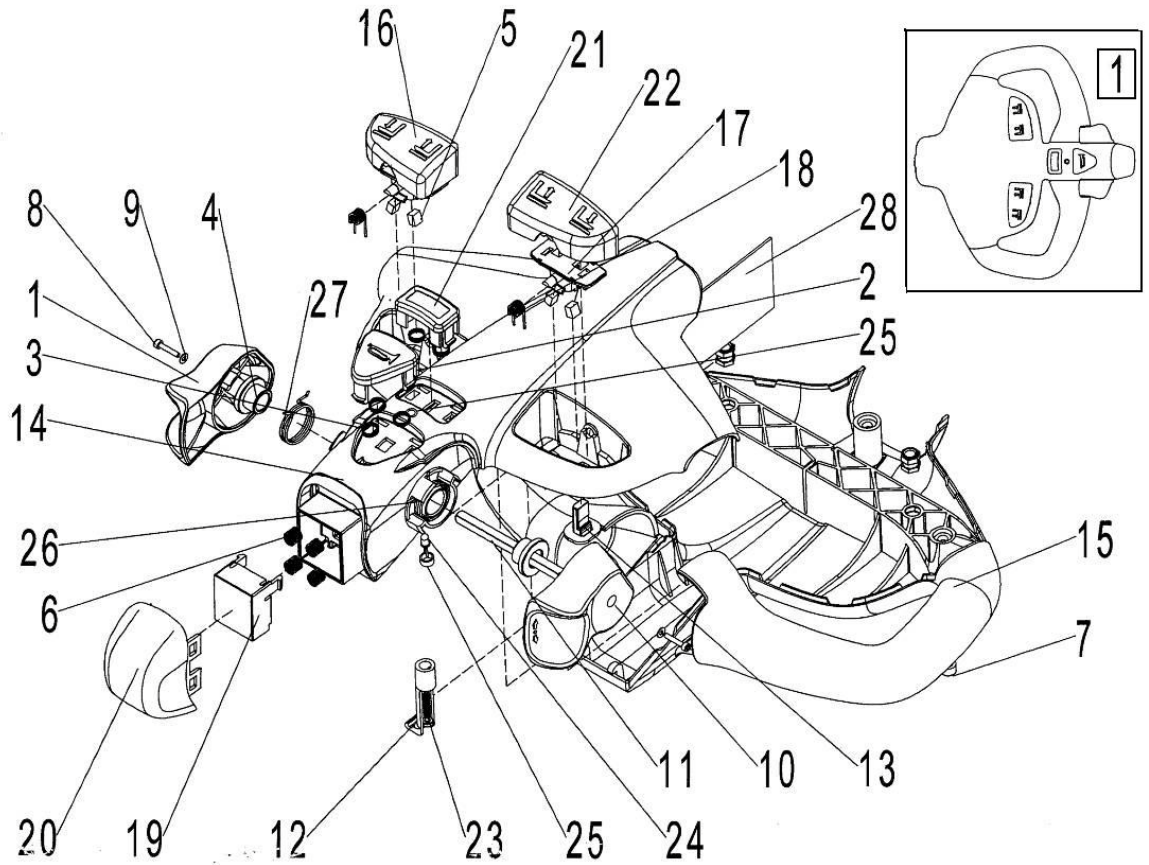


Fig.16 Canbus Tiller

| No. | Art No. | Description | Qty. | Note |
|-----|------------|-----------------------------------|------|----------|
| 1 | 1010114001 | Left drive knob | 1 | |
| 2 | 1000114015 | Horn button | 1 | |
| 3 | 1000131009 | Horn button spring | 5 | |
| 4 | 1000113004 | Cam shaft bushing | 2 | |
| 5 | 1000137001 | Magnetic body | 4 | ▲ |
| 6 | 1000131010 | Emergency reversing button spring | 4 | |
| 7 | 0000023058 | Screw | 3 | M6X10 |
| 8 | 0000023057 | Screw | 2 | M3X16 |
| 9 | 0000025017 | Washer | 2 | 3 |
| 10 | 1010114003 | Right drive knob | 1 | |
| 11 | 1000107002 | Drive rotary knob axle | 1 | |
| 12 | 1000137002 | PCB plate holder | 1 | |
| 13 | 1000134005 | Sensor | 2 | |
| 14 | 1000103012 | Upper part of the handle | 1 | |
| 15 | 1000103013 | Lower part of the handle | 1 | |
| 16 | 1000114017 | Left button | 1 | |
| 17 | 1000137003 | Magnetic body fixing seat | 2 | |
| 18 | 1000131011 | Torsional spring | 2 | |
| 19 | 1000114018 | Emergency reversing button base | 1 | |
| 20 | 1000114020 | Emergency reversing button cover | 1 | |
| 21 | 1000114021 | Option switch main cover | 1 | |
| 22 | 1000114022 | Right button | 1 | |
| 23 | 0000023060 | Screw | 1 | ST4.2X25 |
| 24 | 1000134006 | LED bi-colour light | 1 | |
| 25 | 1000103014 | LED bi-colour light seat | 1 | |
| 26 | 1000131012 | Right drive knob torsional spring | 1 | |
| 27 | 1000131013 | Left drive knob torsional spring | 1 | |
| 28 | 1100135001 | PCB | 1 | |

Fig.17 PT 20I Hydraulic assembly

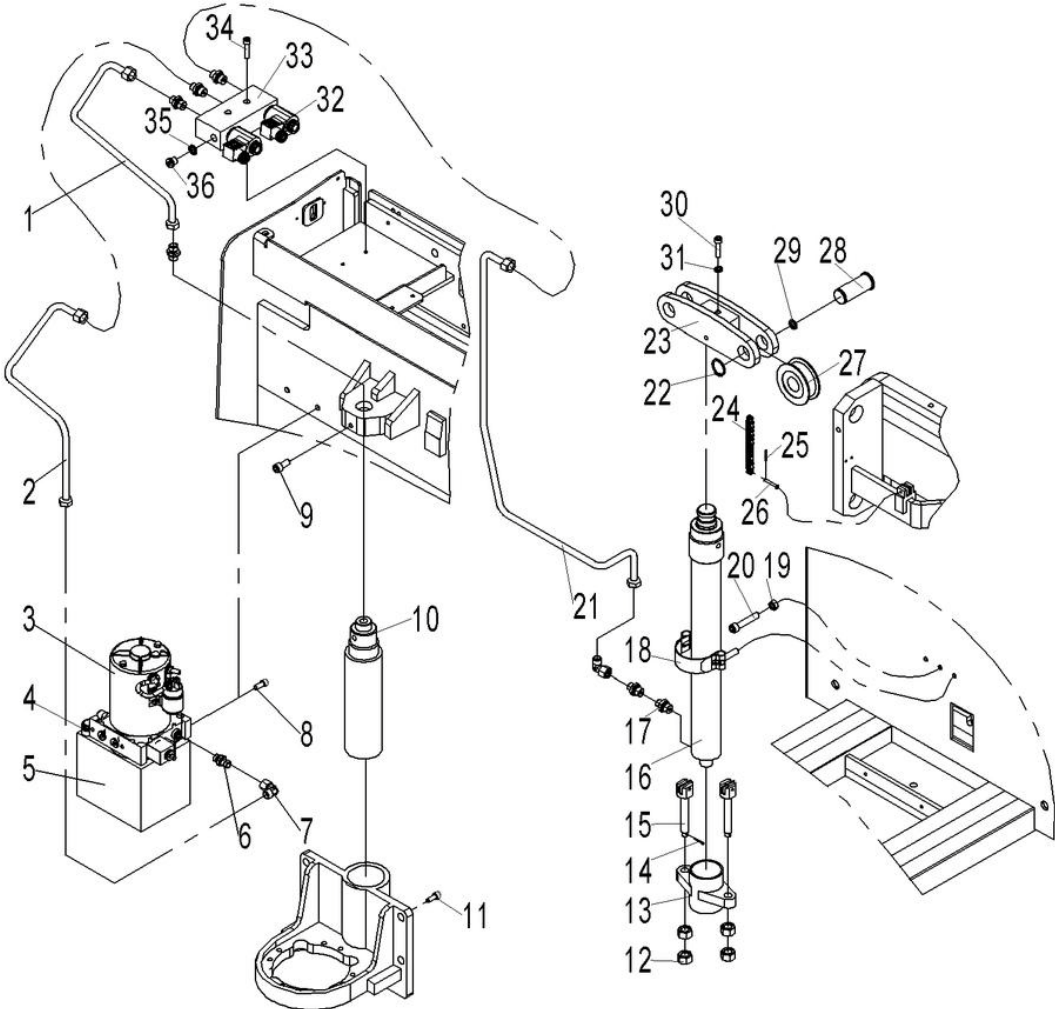


Fig.17 PT 20I Hydraulic Assembly

| No. | Art No. | Description | Qty. | Note |
|-----|------------|------------------------------------|------|---------------|
| 1 | 9000017883 | Hydraulic steel pipe welding(rear) | 1 | |
| 2 | 9000017882 | Hydraulic steel pipe welding(pump) | 1 | |
| 3 | 9000017880 | DC hydraulic power unit | 1 | |
| 4 | 2000303001 | Air plug | 1 | M18x1.5 |
| 5 | 9000017895 | Oil tank welding | 1 | |
| 6 | 9000007842 | Straight joint | 6 | |
| 7 | 9000007838 | Steering linking joint | 2 | |
| 8 | 0000023080 | Screw | 2 | M10x16 |
| 9 | 0000023146 | Screw | 1 | M8x16 |
| 10 | 9000017881 | Cylinder assembly | 1 | |
| 11 | 0000023034 | Screw | 1 | M10x20 |
| 12 | 0090000442 | Nut | 4 | M16x1.5 |
| 13 | 9000017896 | Pull rod seat assembly | 1 | |
| 14 | 0000028011 | Split pin | 2 | 3x40 |
| 15 | 9000017854 | Bolt | 2 | M16x1.5x113.7 |
| 16 | 9000017879 | Cylinder assembly (550) | 1 | |
| 17 | 2000337001 | Safety valve | 1 | |
| 18 | 9000017855 | Hoop components 80 | 1 | |
| 19 | 0000024018 | Nut | 3 | M10 |
| 20 | 0000023355 | Bolt | 1 | M10x45 |
| 21 | 9000017884 | Hydraulic pipe welding(front) | 1 | |
| 22 | 0000026008 | Circlip | 2 | 30 |
| 23 | 9000017843 | Chain wheel seat | 1 | |
| 24 | 0090000882 | Chain | 2 | LH0844x50 |
| 25 | 0000028111 | Split pin | 4 | 1.6x10 |
| 26 | 0090000881 | Short axle | 4 | 5x32 |
| 27 | 9000017842 | Chain wheel bearing | 2 | |
| 28 | 9000017841 | Chain wheel axle | 2 | |
| 29 | 2000302002 | Adjusting washer (thickness 2) | 4 | |
| 30 | 0000023122 | Screw | 1 | M12x50 |

Fig.17 PT 20I Hydraulic Assembly

| No. | Art No. | Description | Qty. | Note |
|-----|------------|-------------------------|------|---------|
| 31 | 0000025024 | Washer | 2 | 12 |
| 32 | 9000013690 | Electromagnetic valve | 2 | |
| 33 | 9000017856 | Hydraulic valve block | 1 | |
| 34 | 0000023575 | Screw | 2 | M6x50 |
| 35 | 0000022051 | Combination seal washer | 1 | 16 |
| 36 | 0090000170 | Screw plug | 1 | M16x1.5 |

Fig.18 PT 20D Hydraulic assembly

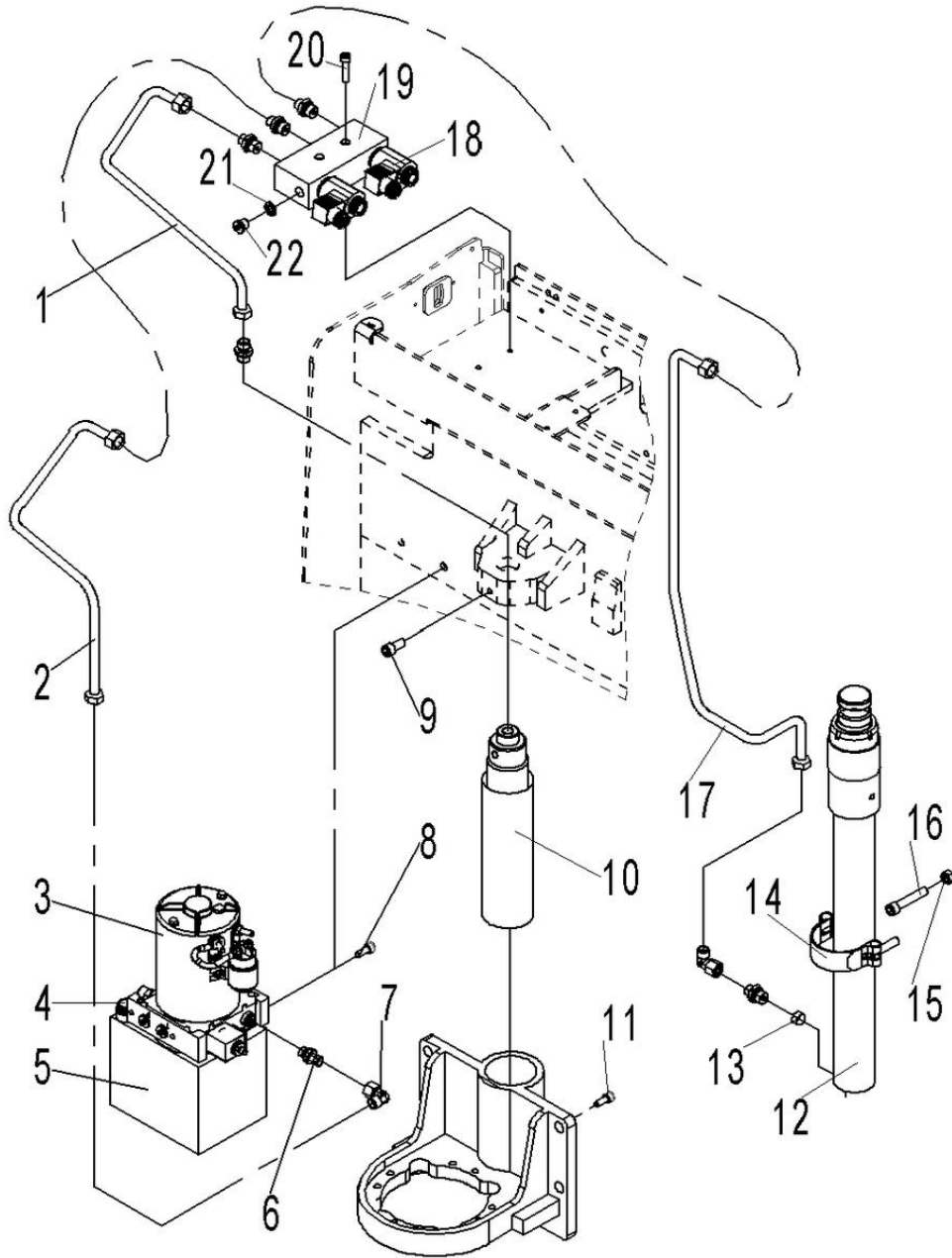


Fig.18 PT 20D Hydraulic Assembly

| No. | Art No. | Description | Qty. | Note |
|-----|------------|-------------------------------|------|---------|
| 1 | 9000017883 | Hydraulic pipe welding(rear) | 1 | |
| 2 | 9000017882 | Hydraulic pipe welding(pump) | 1 | |
| 3 | 9000017880 | DC hydraulic power unit | 1 | |
| 4 | 2000303001 | Air plug M18x1.5 | 1 | |
| 5 | 9000017895 | Oil tank welding | 1 | |
| 6 | 9000007842 | Straight joint | 6 | |
| 7 | 9000007838 | Steering linking joint | 2 | |
| 8 | 0000023080 | Screw | 2 | M10x16 |
| 9 | 0000023146 | Screw | 1 | M8x16 |
| 10 | 9000017881 | Cylinder assembly (front) | 1 | |
| 11 | 0000023034 | Screw | 1 | M10x20 |
| 12 | 9000018229 | Cylinder assembly (rear) | 1 | 1600 |
| | 9000018230 | Cylinder assembly (rear) | 1 | 2000 |
| | 9000018408 | Cylinder assembly (rear) | 1 | 2500 |
| 13 | 2000337001 | Safety valve | 1 | |
| 14 | 9000017855 | Hoop components 80 | 1 | |
| 15 | 0000024018 | Nut | 3 | M10 |
| 16 | 0000023355 | Bolt | 1 | M10x45 |
| 17 | 9000017884 | Hydraulic pipe welding(front) | 1 | |
| 18 | 9000013690 | Electromagnetic valve | 2 | |
| 19 | 9000017856 | Hydraulic valve block | 1 | |
| 20 | 0000023575 | Screw | 2 | M6x50 |
| 21 | 0000022051 | Combination seal washer | 1 | 16 |
| 22 | 0090000170 | Screw plug | 1 | M16x1.5 |

Fig.19 Cylinder assembly (front)

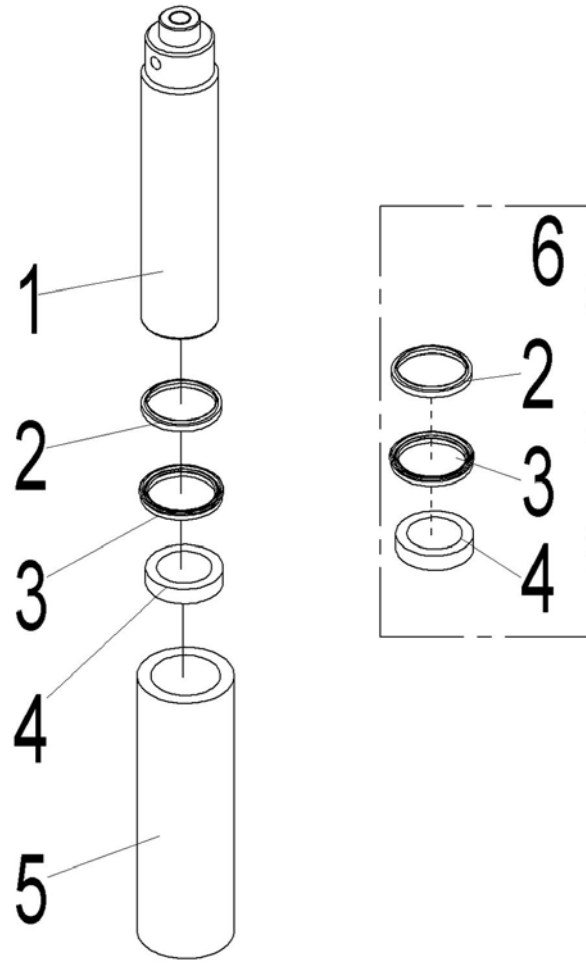


Fig.19 Cylinder Assembly (front)

| No. | Art No. | Description | Qty. | Note |
|-----|------------|---------------|------|-------------|
| 1 | 9000017840 | Piston rod | 1 | 50x232 |
| 2 | 9000010701 | Dust ring | 1 | 50X58X5/6.5 |
| 3 | 9000010700 | Y seal ring | 1 | 50X60X6/7 |
| 4 | 9000010699 | Support ring | 1 | 50X55X15 |
| 5 | 9000017899 | Cylinder body | 1 | |
| 6 | 9000010704 | Seal kits | 1 | |

Fig.20 PT 20I Cylinder assembly (rear)

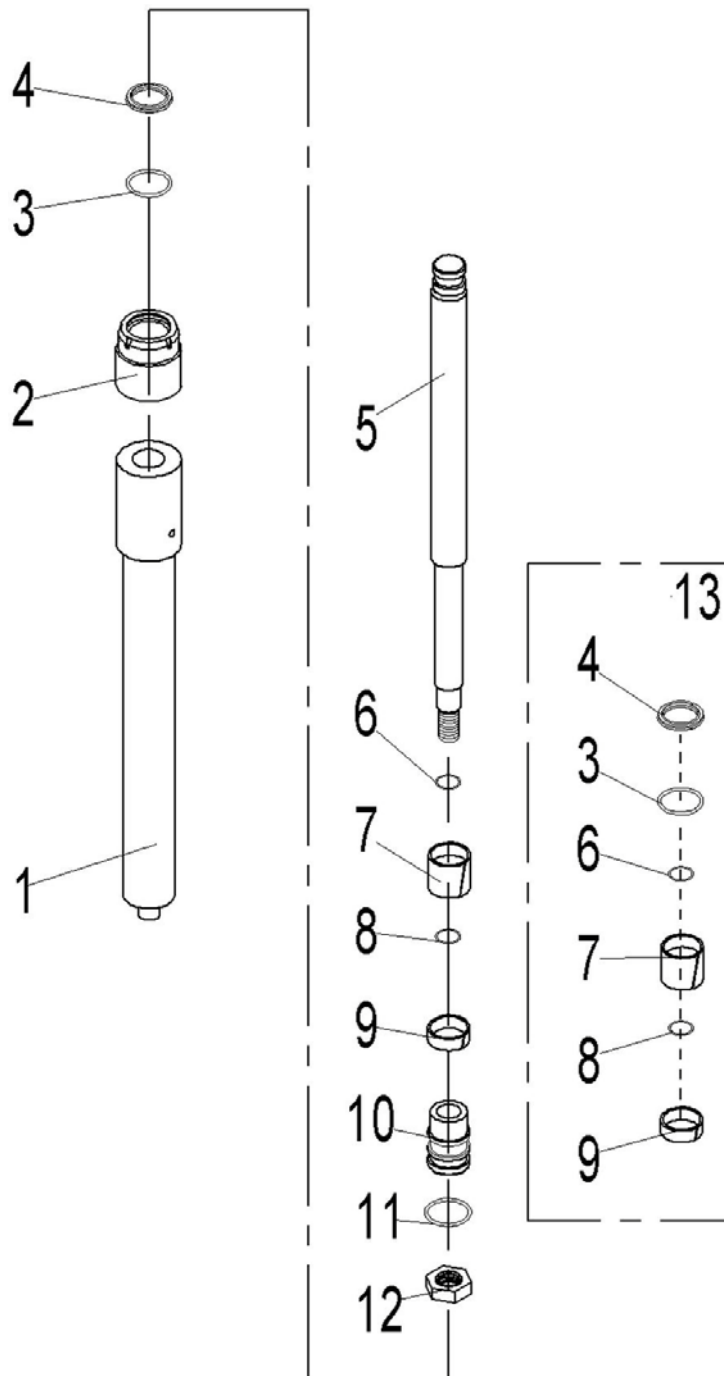


Fig.20 PT 20I Cylinder Assembly (rear)

| No. | Art No. | Description | Qty. | Note |
|-----|------------|---------------------------|------|------|
| 1 | 9000017872 | Barrel | 1 | |
| 2 | 9000009358 | Cylinder cover | 1 | |
| 3 | 9000009927 | Supporting ring 40X44X10 | 1 | |
| 4 | 9000009926 | Dust ring 40X48X5/6.5 | 1 | |
| 5 | 9000017873 | Lever | 1 | |
| 6 | 0000022014 | O rubber seal ring 25x3.1 | 2 | |
| 7 | 9000009361 | Piston | 1 | |
| 8 | 0000022013 | O rubber seal ring 45x3.1 | 1 | |
| 9 | 9000015661 | Support ring 40X45X10 | 1 | |
| 10 | 9000017912 | Y ring 35X45X6/7 | 1 | |
| 11 | 0000024074 | I nut M20x1.5 | 1 | |
| 12 | 0000025033 | Washer 20 | 1 | |
| 13 | 9000009953 | Cylinder seal kits | 1 | |

Fig.21 PT 20D Cylinder assembly (rear1600/2000)

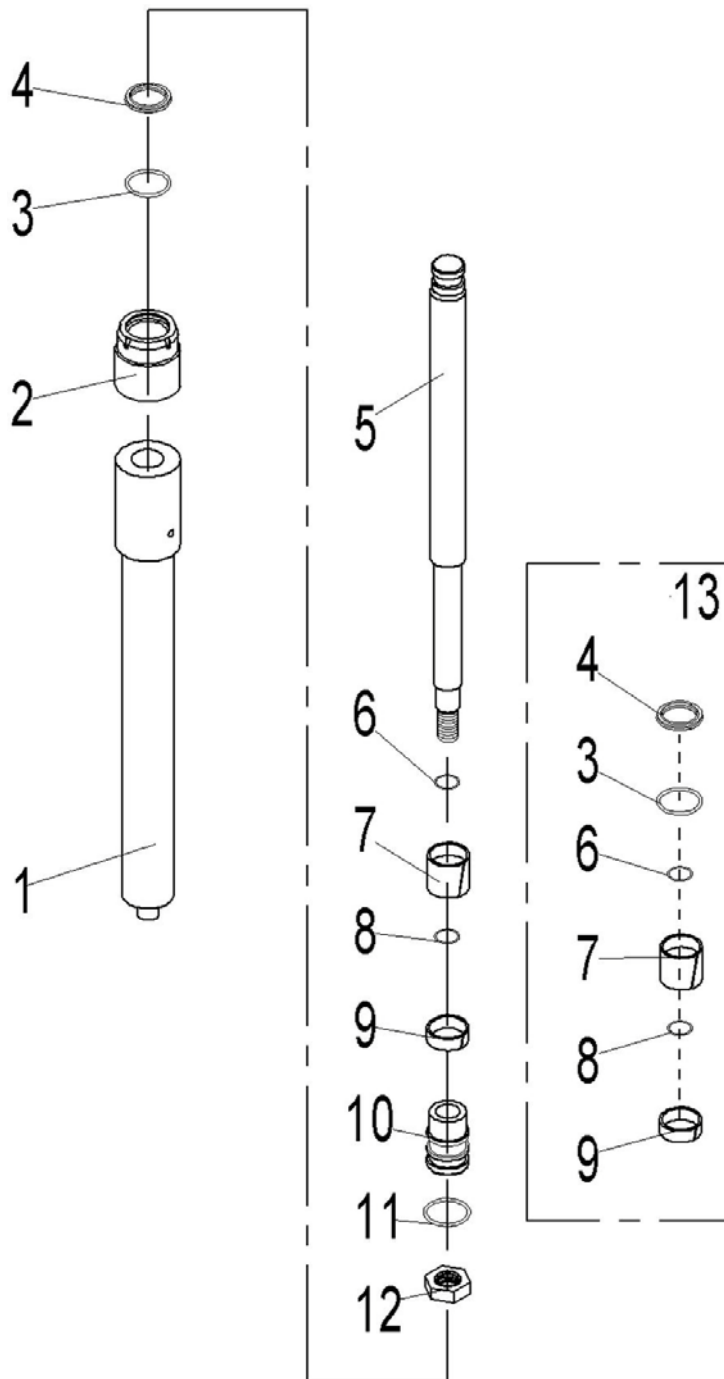


Fig.21 PT 20D Cylinder Assembly (rear1600/2000)

| No. | Art No. | Description | Qty. | Note |
|-----|------------|---------------------------|------|------|
| 1 | 9000018219 | Barrel | 1 | |
| | 9000018224 | Barrel | 1 | |
| 2 | 9000009358 | Cylinder cover | | |
| 3 | 9000009927 | Support ring 40X44X10 | 1 | |
| 4 | 9000009926 | Dust ring 40X48X5/6.5 | 1 | |
| 5 | 9000018220 | Lever | 1 | |
| | 9000018225 | Lever | 1 | |
| 6 | 0000022014 | O rubber seal ring 25x3.1 | 2 | |
| 7 | 9000009361 | Piston | 1 | |
| 8 | 0000022013 | O rubber seal ring 45x3.1 | 1 | |
| 9 | 9000015661 | Support ring 40X45X10 | 1 | |
| 10 | 9000017912 | Y ring 35X45X6/7 | 1 | |
| 11 | 0000024074 | I nut M20x1.5 | 1 | |
| 12 | 0000025033 | Washer 20 | 1 | |
| 13 | 9000009953 | Cylinder seal kits | 1 | |

Fig.22 PT 20D Cylinder assembly (rear2500)

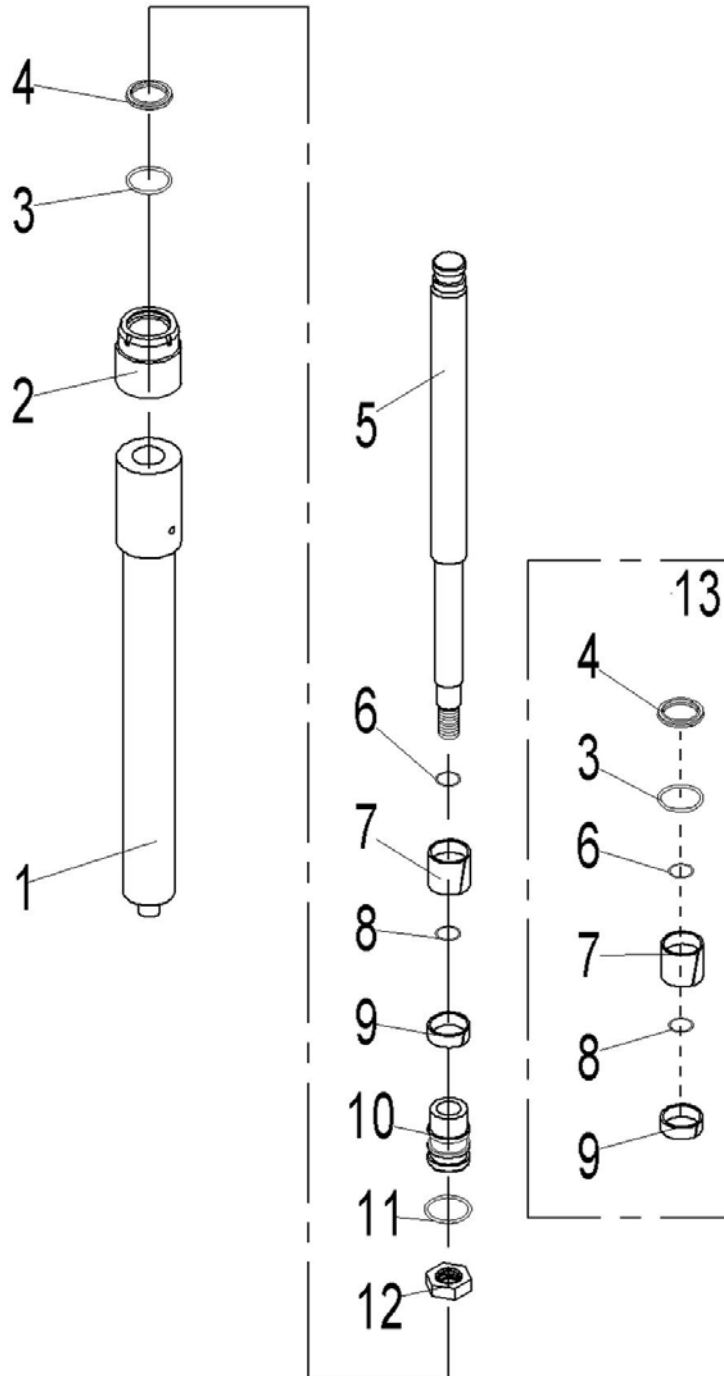


Fig.22 PT 20D Cylinder Assembly (rear2500)

| No. | Art No. | Description | Qty. | Note |
|-----|------------|---------------------------|------|------|
| 1 | 9000018409 | Barrel | 1 | |
| 2 | 9000009358 | Cylinder cover | 1 | |
| 3 | 9000009927 | Support ring 40X44X10 | 1 | |
| 4 | 9000009926 | Dust ring 40X48X5/6.5 | | |
| 5 | 9000018410 | Lever | 1 | |
| 6 | 0000022014 | O rubber seal ring 25x3.1 | 2 | |
| 7 | 9000009361 | Piston | 1 | |
| 8 | 0000022013 | O rubber seal ring 45x3.1 | 1 | |
| 9 | 9000015661 | Support ring 40X45X10 | 1 | |
| 10 | 9000017912 | Y ring 35X45X6/7 | 1 | |
| 11 | 0000024074 | I nut M20x1.5 | 1 | |
| 12 | 0000025033 | Washer 20 | 1 | |
| 13 | 9000009953 | Cylinder seal kits | 1 | |

Fig.23 Pump 2.2KW

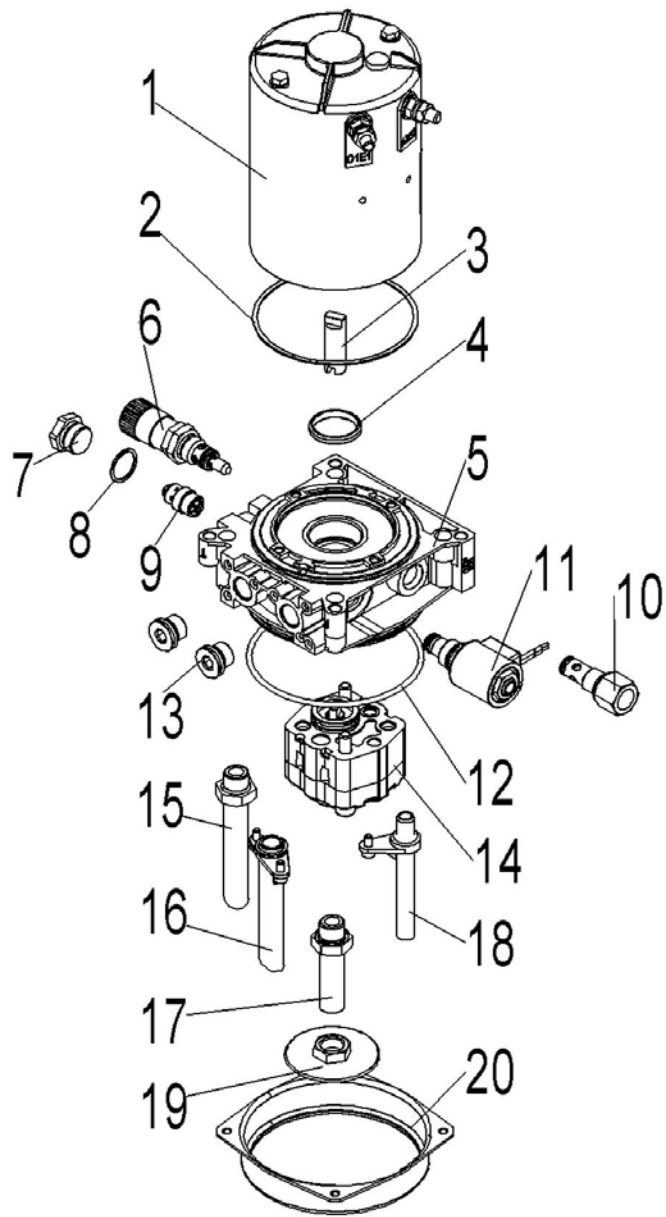


Fig.23 Pump 2.2KW

| No. | Art No. | Description | Qty. | Note |
|-----|------------|--------------------------------|------|------------------|
| 1 | 9000010900 | Motor | 1 | 24V 2.2KW |
| 2 | 9000012024 | Paper pad | 1 | |
| 3 | 9000010901 | Coupler | 1 | |
| 4 | 9000012025 | Circlip (yellow) | 4 | |
| 5 | 2000300002 | Valve block | 1 | G3/8 |
| 6 | 2040315003 | Overflow valve | 1 | >150BAR |
| 7 | 2000323003 | MC tiller plug | 1 | |
| 8 | 9000017833 | Tiller plug washer | 1 | |
| 9 | 9000012018 | Throttle valve | | G3/8 6.3L/min F6 |
| 10 | 9000010903 | Check valve | 1 | P1 |
| 11 | 9000010904 | Electromagnetic valve | 1 | 24V DL |
| 12 | 9000010908 | Seal ring | 1 | 110.72*3.53 |
| 13 | 9000010906 | Screw plug | 2 | G3/8 |
| 14 | 9000017834 | Gear pump | 1 | |
| 15 | 9000017835 | Oil return hose | 1 | |
| 16 | 9000017836 | T oil return hose | 1 | |
| 17 | 9000010910 | Oil suction hose | 1 | |
| 18 | 9000008872 | Overflow valve oil return hose | 1 | |
| 19 | 9000010911 | Oil suction filter D63 | 1 | D63 |
| 20 | 9000017837 | Connecting flange | 1 | |

Fig.24 PT 20I Electrical assembly

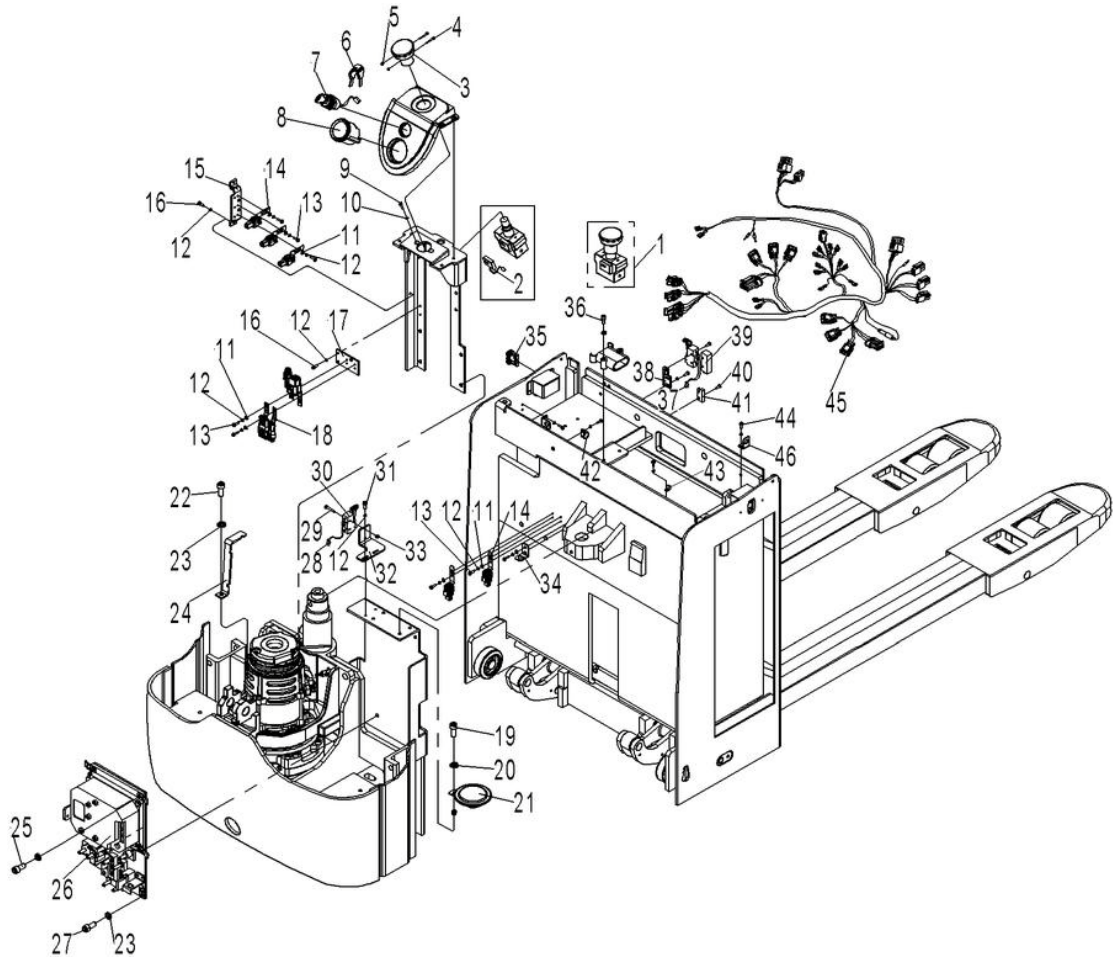


Fig.24 PT20I Electrical Assembly

| No. | Art No. | Description | Qty. | Note |
|-----|------------|---|------|--------------|
| 1 | 9000008515 | DC power switch | 1 | ZDK32-350 |
| 2 | 9000008517 | DC power switch ZDK32-350 micro switch | 1 | |
| 3 | 9000008516 | DC power switch | 1 | ZDK32-350 |
| 4 | 0000023685 | Screw | 2 | M3x25 |
| 5 | 0000024002 | I nut | 2 | M3 |
| 6 | 9000008519 | Key switch | 1 | LKS-101A key |
| 7 | 9000008326 | Key switch | 1 | LKS-101A |
| 8 | 1000434025 | Indicator | 1 | CURTIS 803 |
| 9 | 0000023107 | Screw | 2 | M5x16 |
| 10 | 0000025015 | Washer | 2 | 5 |
| 11 | 0000025019 | Flat washer | 3 | 4 |
| 12 | 0000025018 | Washer | 10 | 4 |
| 13 | 0000023016 | Screw | 6 | M4x12 |
| 14 | 1000204002 | AMP connector seat | 5 | |
| 15 | 9000010711 | Flexing plate | 1 | |
| 16 | 0000023056 | Screw | 4 | M4x12 |
| 17 | 9000010712 | Transition plate | 1 | |
| 18 | 9000007981 | Connector seat | 3 | |
| 19 | 0000023020 | Screw | 2 | M6x20 |
| 20 | 0000025006 | Washer | 3 | 6 |
| 21 | 1000434015 | Horn | 1 | DC24V |
| 22 | 0000023067 | Screw | 1 | M8x16 |
| 23 | 0000025001 | Washer | 5 | 8 |
| 24 | 9000010714 | Cable seat | 1 | |
| 25 | 0000023172 | Screw | 2 | M8x30 |
| 26 | 9000010644 | Electronic control components | 1 | |
| 27 | 0000023047 | Screw | 2 | M8x25 |
| 28 | 9000010636 | Limit control wiring harness | 1 | |
| 29 | 0000023041 | Screw | 2 | M4x30 |
| 30 | 9000000794 | Micro switch | 1 | RZ-15GW2S-B3 |
| 31 | 0000023059 | Screw | 2 | M4x8 |

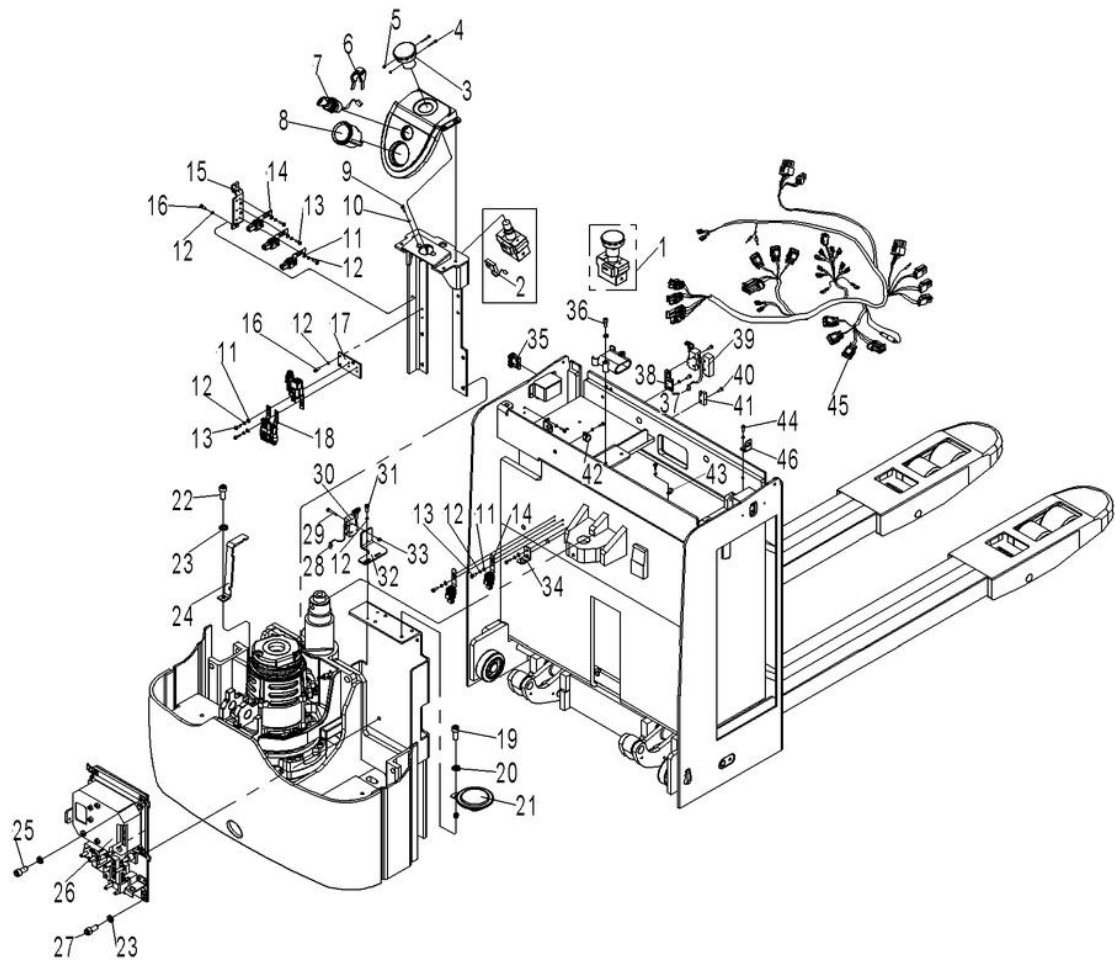


Fig.24 PT20I Electrical Assembly

| No. | Art No. | Description | Qty. | Note |
|-----|------------|---|------|-------|
| 32 | 9000017832 | Mounting plate(limit) | 1 | |
| 33 | 0000024004 | Nut | 2 | M4 |
| 34 | 1010404005 | Connector fixing frame 2 pins | 1 | |
| 35 | 9000002376 | Rocker switch 3203-00092-OV | 2 | |
| 36 | 0000023106 | Screw | 2 | M6x30 |
| 37 | 9000017648 | Limit control wiring harness 2 | 1 | |
| 38 | 9000017827 | Mounting plate (limit) | 1 | |
| 39 | 2040603002 | Micro switch protective cover | 1 | |
| 40 | 0000023216 | Screw | 2 | M3x8 |
| 41 | 9000008332 | Magnetic switch HWK23 | 1 | |
| 42 | 9000009789 | Cable fixing part UC-3 | 1 | |
| 43 | 9000005742 | Cable fixing part UC-1 | 2 | |
| 44 | 0000023071 | Screw | 6 | M4x8 |
| 45 | 9000017647 | Main control wiring harness (COMBIACX+210AH) | 1 | |
| 46 | 1020418001 | Connector fixing frame 4 pins | 2 | |

Fig.25 PT 20D Electrical assembly (1600/2000)

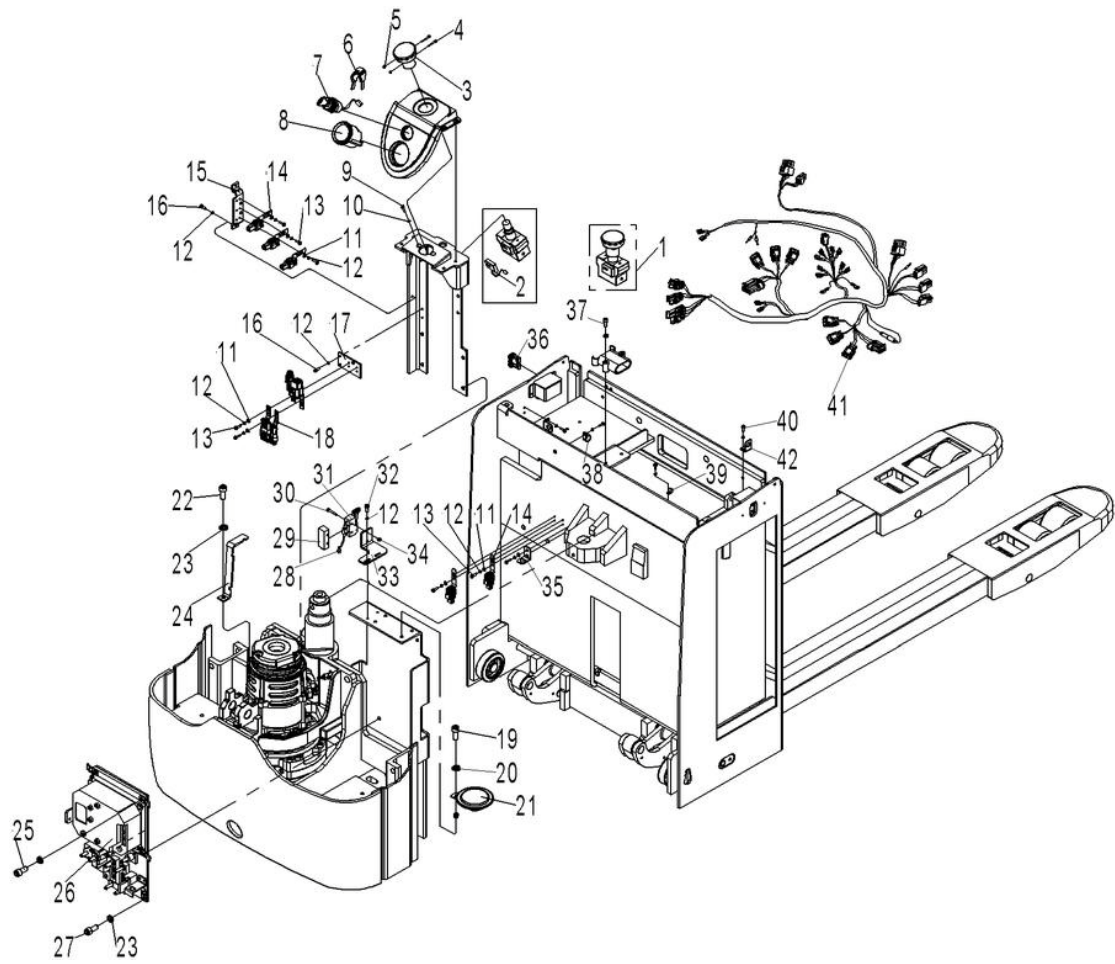


Fig.25 PT20D Electrical Assembly (1600/2000)

| No. | Art No. | Description | Qty. | Note |
|-----|------------|---|------|--------------|
| 1 | 9000008515 | DC power switch | 1 | ZDK32-350 |
| 2 | 9000008517 | DC power switch ZDK32-350 micro switch | 1 | |
| 3 | 9000008516 | DC power switch | 1 | ZDK32-350 |
| 4 | 0000023685 | Screw | 2 | M3×25 |
| 5 | 0000024002 | I nut | 2 | M3 |
| 6 | 9000008519 | Key switch | 1 | LKS-101A key |
| 7 | 9000008326 | Key switch | 1 | LKS-101A |
| 8 | 1000434025 | Indicator | 1 | CURTIS 803 |
| 9 | 0000023107 | Screw | 2 | M5×16 |
| 10 | 0000025015 | Washer | 2 | 5 |
| 11 | 0000025019 | Flat washer | 3 | 4 |
| 12 | 0000025018 | Washer | 10 | 4 |
| 13 | 0000023016 | Screw | 6 | M4×12 |
| 14 | 1000204002 | AMP two pins connector seat | 5 | |
| 15 | 9000010711 | Connector flexing plate | 1 | |
| 16 | 0000023056 | Screw | 4 | M4×12 |
| 17 | 9000010712 | Transition plate | 1 | |
| 18 | 9000007981 | Connector seat | 3 | |
| 19 | 0000023020 | Screw | 2 | M6×20 |
| 20 | 0000025006 | Washer | 3 | 6 |
| 21 | 1000434015 | Horn | 1 | DC24V |
| 22 | 0000023067 | Screw | 1 | M8×16 |
| 23 | 0000025001 | Washer | 5 | 8 |
| 24 | 9000010714 | Cable seat | 1 | |
| 25 | 0000023172 | Screw | 2 | M8×30 |
| 26 | 9000010644 | Electronic control components | 1 | |
| 27 | 0000023047 | Screw | 2 | M8×25 |
| 28 | 9000010636 | Limit control wiring harness | 1 | |
| 29 | 2040603002 | Micro switch protective cover | 1 | |
| 30 | 0000023041 | Screw | 2 | M4×30 |
| 31 | 9000000794 | Micro switch | 1 | RZ-15GW2S-B3 |

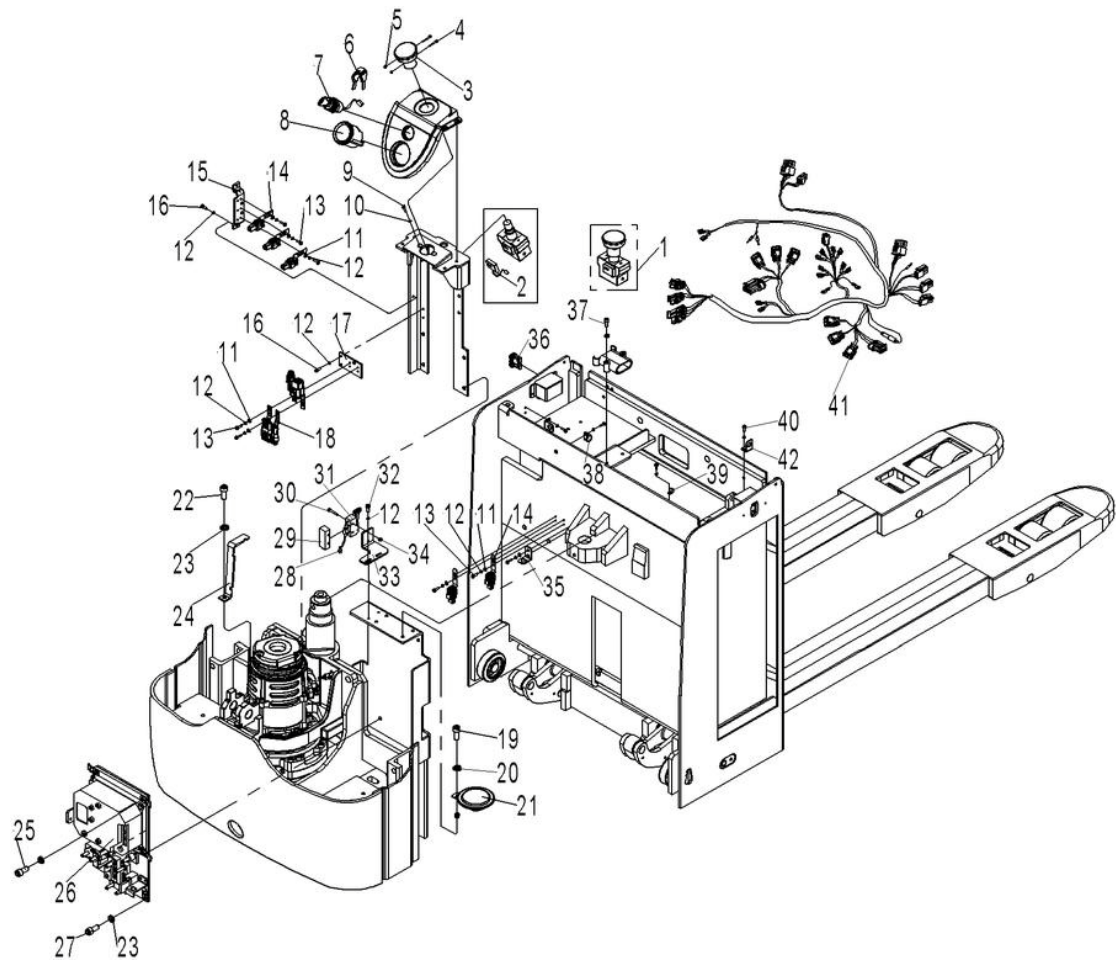


Fig.25 PT20D Electrical Assembly (1600/2000)

| No. | Art No. | Description | Qty. | Note |
|-----|------------|-------------------------------|------|----------------|
| 32 | 0000023059 | Screw | 2 | M4x8 |
| 33 | 9000017832 | Mounting plate(limit) | 1 | |
| 34 | 0000024004 | Lock nut | 2 | M4 |
| 35 | 1010404005 | Connector fixing frame 2 pins | 1 | |
| 36 | 9000002376 | Rocker switch 3203-00092-OV | 2 | |
| 37 | 0000023106 | Screw | 2 | M6x30 |
| 38 | 9000009789 | Cable fixing part UC-3 | 1 | |
| 39 | 9000005742 | Cable fixing part UC-1 | 2 | |
| 40 | 0000023071 | Screw | 6 | M4x8 |
| 41 | 9000017647 | Main control wiring harness | 1 | COMBIACX+210AH |
| 42 | 1020418001 | Connector fixing frame 4 pins | 2 | |

Fig.26 PT 20D Electrical assembly (2500)

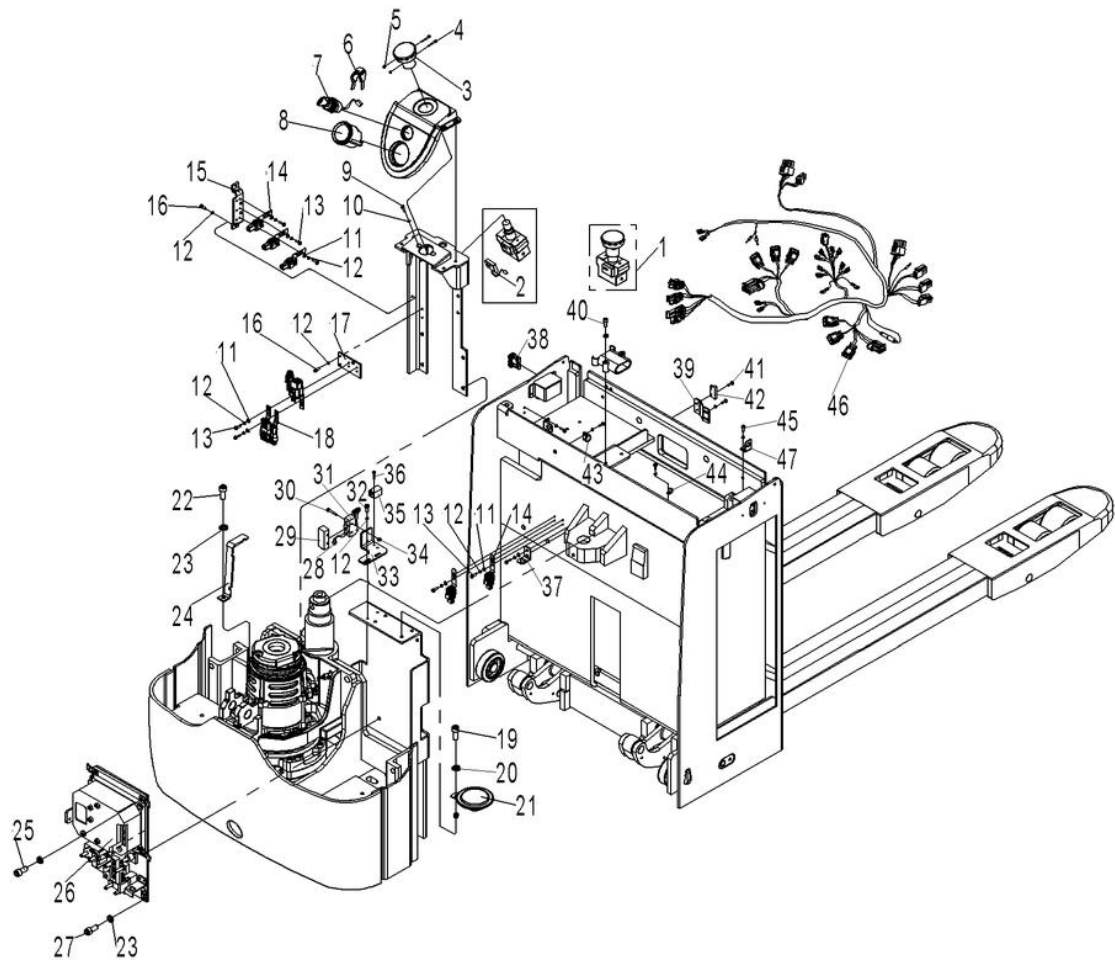


Fig.26 PT20D Electrical Assembly (2500)

| No. | Art No. | Description | Qty | Note |
|-----|------------|---|-----|--------------|
| 1 | 9000008515 | DC power switch | 1 | ZDK32-350 |
| 2 | 9000008517 | DC power switch ZDK32-350 micro switch | 1 | |
| 3 | 9000008516 | DC power switch | 1 | ZDK32-350 |
| 4 | 0000023685 | Screw | 2 | M3x25 |
| 5 | 0000024002 | I nut | 2 | M3 |
| 6 | 9000008519 | Key switch | 1 | LKS-101A key |
| 7 | 9000008326 | Key switch | 1 | LKS-101A |
| 8 | 1000434025 | Indicator | 1 | CURTIS 803 |
| 9 | 0000023107 | Screw | 2 | M5x16 |
| 10 | 0000025015 | Washer | 2 | 5 |
| 11 | 0000025019 | Flat washer | 3 | 4 |
| 12 | 0000025018 | Washer | 10 | 4 |
| 13 | 0000023016 | Screw | 6 | M4x12 |
| 14 | 1000204002 | AMP two pins connector seat | 5 | |
| 15 | 9000010711 | Connector flexing plate | 1 | |
| 16 | 0000023056 | Screw | 4 | M4x12 |
| 17 | 9000010712 | Transition plate | 1 | |
| 18 | 9000007981 | Connector seat | 3 | |
| 19 | 0000023020 | Screw | 2 | M6x20 |
| 20 | 0000025006 | Washer | 3 | 6 |
| 21 | 1000434015 | Horn | 1 | DC24V |
| 22 | 0000023067 | Screw | 1 | M8x16 |
| 23 | 0000025001 | Washer | 5 | 8 |
| 24 | 9000010714 | Cable seat | 1 | |
| 25 | 0000023172 | Screw | 2 | M8x30 |
| 26 | 9000010644 | Electronic control components | 1 | |
| 27 | 0000023047 | Screw | 2 | M8x25 |
| 28 | 9000010636 | Limit control wiring harness | 1 | |
| 29 | 2040603002 | Micro switch protective cover | 1 | |
| 30 | 0000023041 | Screw | 2 | M4x30 |
| 31 | 9000000794 | Micro switch | 1 | RZ-15GW2S-B3 |

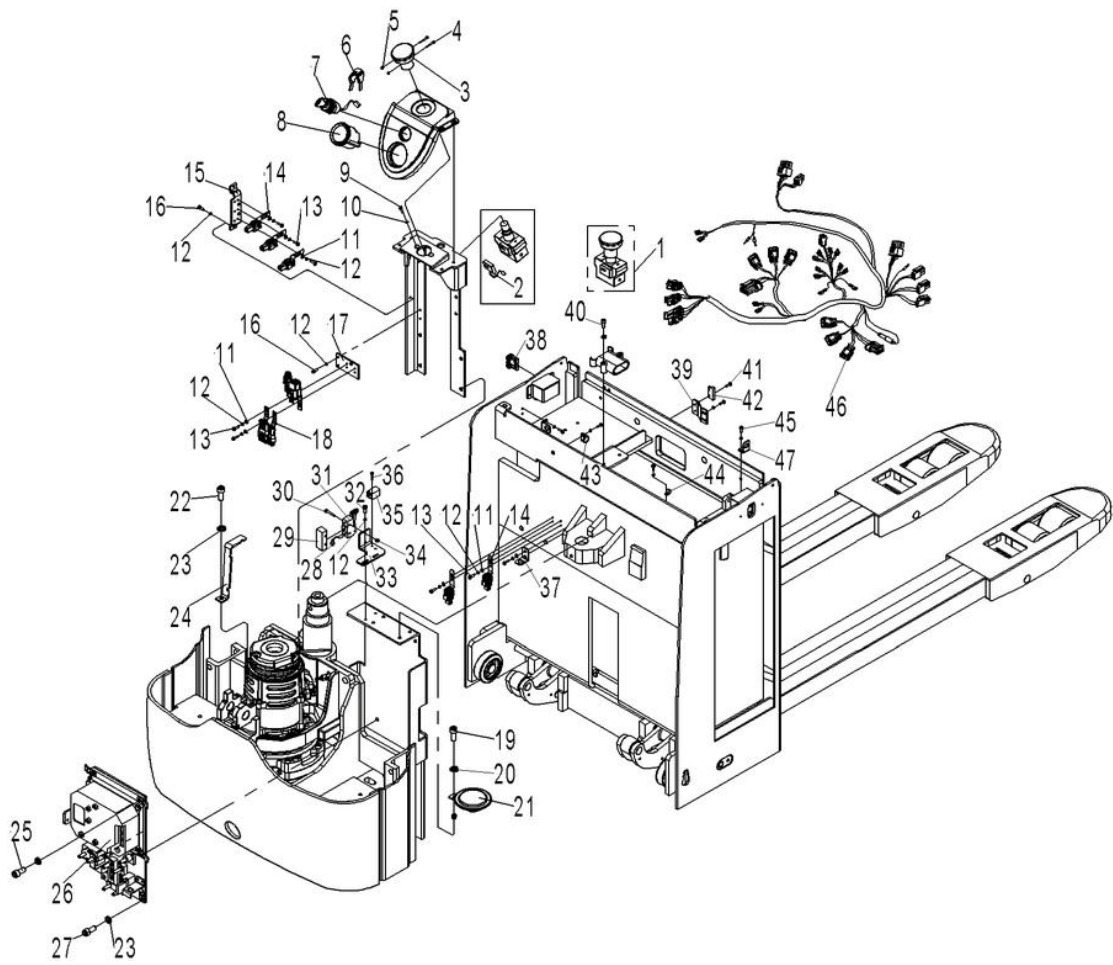


Fig.26 PT20D Electrical Assembly (2500)

| No. | Art No. | Description | Qty. | Note |
|-----|------------|-------------------------------|------|------------|
| 32 | 0000023059 | Screw | 2 | M4x8 |
| 33 | 9000017832 | Mounting plate(limit) | 1 | |
| 34 | 0000024004 | Nut | 2 | M4 |
| 35 | 9000002319 | Proximity switch | 1 | NBN5-F7-E2 |
| 36 | 0000023075 | Screw | 2 | M3x20 |
| 37 | 1010404005 | Connector fixing frame 2 pins | 1 | |
| 38 | 9000002376 | Rocker switch 3203-00092-OV | 2 | |
| 39 | 9000018411 | Fixed plate (magnetic switch) | 1 | |
| 40 | 0000023106 | Screw | 2 | M6x30 |
| 41 | 0000023216 | Screw | 2 | M3x8 |
| 42 | 9000008332 | Magnetic switch HWK23 | 1 | |
| 43 | 9000009789 | Cable fixing part UC-3 | 1 | |
| 44 | 9000005742 | Cable fixing part UC-1 | 2 | |
| 45 | 0000023071 | Screw | 6 | M4x8 |
| 46 | 9000018264 | Main control wiring harness | 1 | |
| 47 | 1020418001 | Connector fixing frame 4 pins | 2 | |

Fig.27 Electronic control components

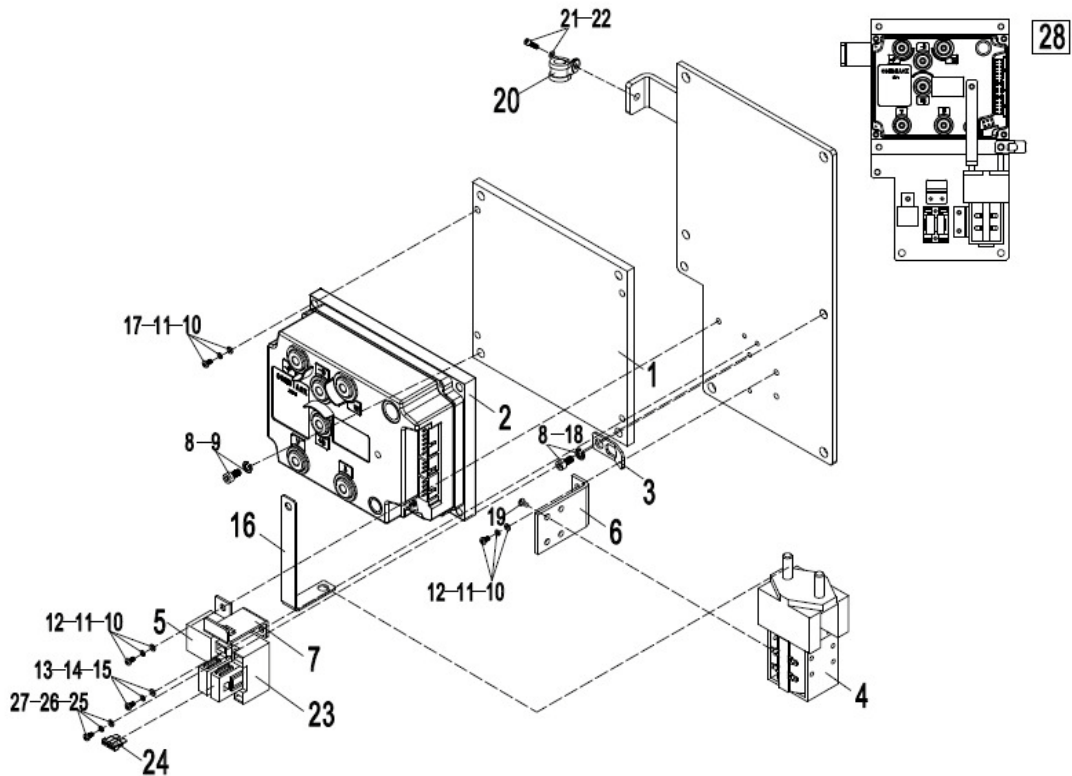


Fig.27 Electronic Control Components

| No. | Art No. | Description | Qty. | Note |
|-----|------------|-------------------------------|------|-----------------|
| 1 | 9000010659 | Aluminium plate | 1 | |
| 2 | 9000016047 | Controller | 1 | COMBIACX 24/240 |
| 3 | 9000009791 | Cable hanging plate | 3 | |
| 4 | 2390434003 | Contactor | 1 | SW180B-4 DC24V |
| 5 | 1000434041 | Relay | 1 | ACR01F-F-1AD |
| 6 | 9000017658 | Main contactor mounting frame | 1 | |
| 7 | 9000007679 | Programmer plug fixing frame | 1 | |
| 8 | 0000025004 | Washer | 2 | 8 |
| 9 | 0000023013 | Screw | 1 | M8x16 |
| 10 | 0000023516 | Screw | 1 | M5x10 |
| 11 | 0000025015 | Washer | 5 | 5 |
| 12 | 0000025014 | Flat washer | 5 | 5 |

| | | | | |
|----|------------|---|----|------------|
| 13 | 0000025018 | Washer | 10 | 4 |
| 14 | 0000025019 | Flat washer | 10 | 4 |
| 15 | 0000023307 | Screw | 6 | M4x10 |
| 16 | 9000017657 | Copper bar | 1 | |
| 17 | 0000023673 | Screw | 4 | M5x16 |
| 18 | 0000023166 | Screw | 1 | M8x20 |
| 19 | 90000395 | Screw | 2 | M5x8 |
| 20 | 9000008325 | YGE clip | 1 | |
| 21 | 0000023040 | Screw | 1 | M6x16 |
| 22 | 0000023055 | Flat washer | 1 | 6 |
| 23 | 9000008586 | Fuse seat | 1 | BD-2X10A-1 |
| 24 | 1000434040 | Fuse 10A | 2 | |
| 25 | 0000025018 | Washer 4 | 6 | 4 |
| 26 | 0000025019 | Flat washer 4 | 6 | 4 |
| 27 | 0000023019 | Screw | 2 | M4x30 |
| 28 | 9000017656 | Electronic control components (COMBIACX+210AH) | 1 | |

Fig.28 Main wiring harness

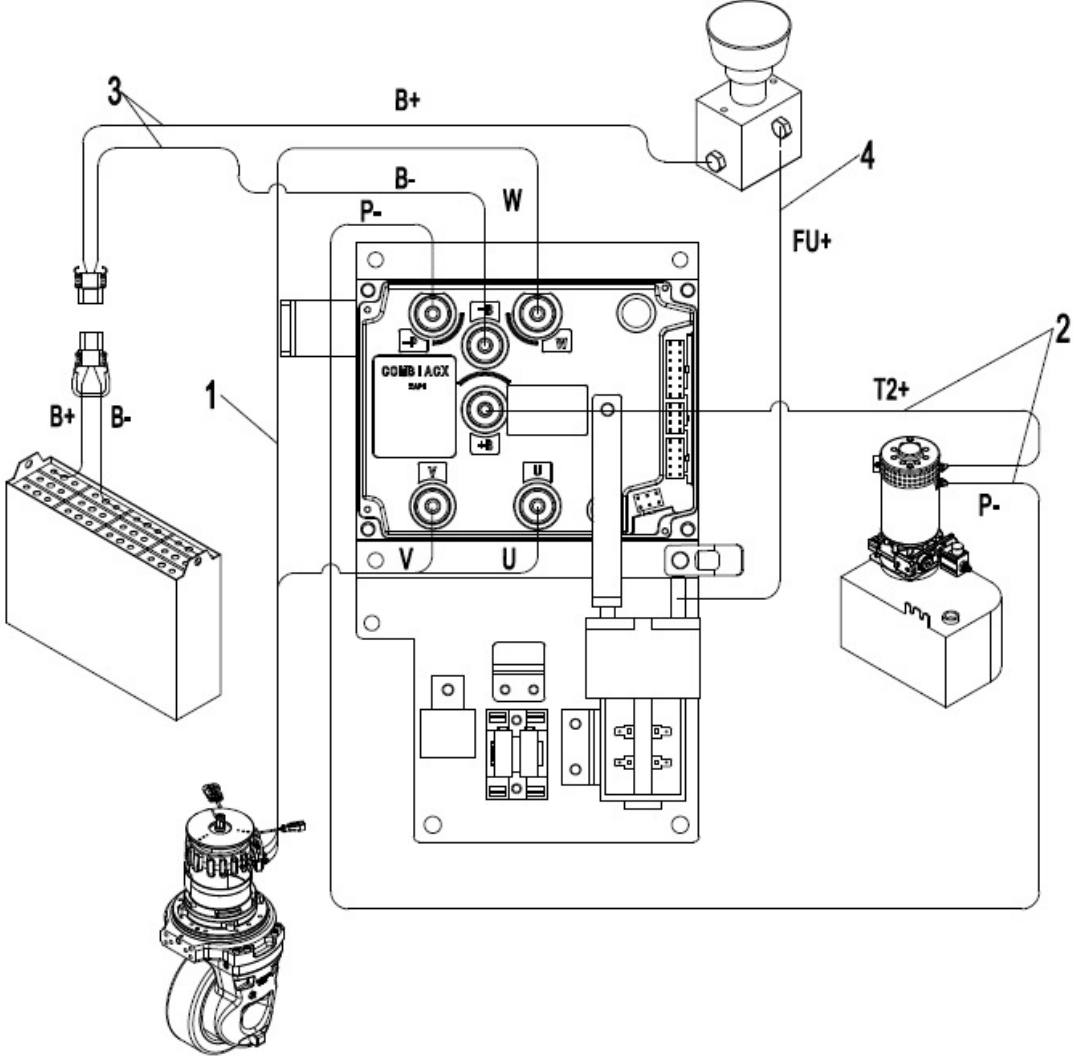


Fig.28 Main Wiring Harness

| No. | Art No. | Description | Qty. | Note |
|-----|------------|--|------|------|
| 1 | 9000017653 | Cable-P--10-6-8-1000 | 1 | |
| 2 | 9000017652 | Cable -T2+-10-6-8-1080 | 1 | |
| 3 | 9000017654 | Main power supply wiring harness (COMBIACX+210AH) | 1 | |
| 4 | 9000017655 | Cable -FU+-25-8-8-810 | 1 | |
| 5 | 9000017651 | Cable -W-16-6-6-360 | 1 | |
| 6 | 9000017649 | Cable -U-16-6-6-730 | 1 | |
| 7 | 9000017650 | Cable -V-16-6-6-780 | 1 | |

Fig.29 PT 20I stickers (EU)

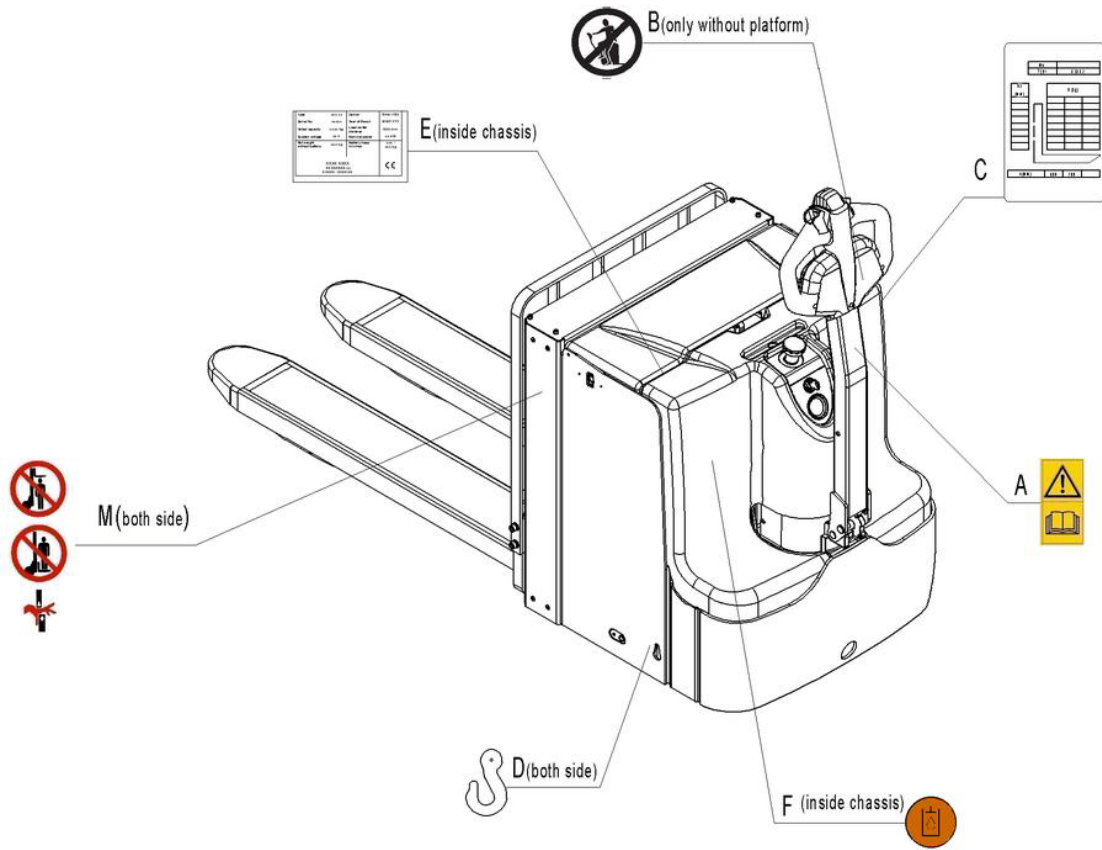


Fig.29 PT 20I Sticker (EU)

| No. | Art No. | Description | Qty. | Note |
|-----|------------|--|------|------|
| A | 9000003570 | Warning sticker | 1 | |
| B | 9000003573 | 'No passengers' decal | 1 | |
| C | 9000017849 | Residual lift capacity sticker | 1 | |
| D | 9000005967 | Crane hook label | 2 | |
| E | 9000017850 | CE sticker | 1 | |
| F | 9000008555 | Filling sticker | 1 | |
| M | 9000003923 | Warning decal: Do not step under or on the forks | 1 | |

Fig.30 PT 20I stickers (US)

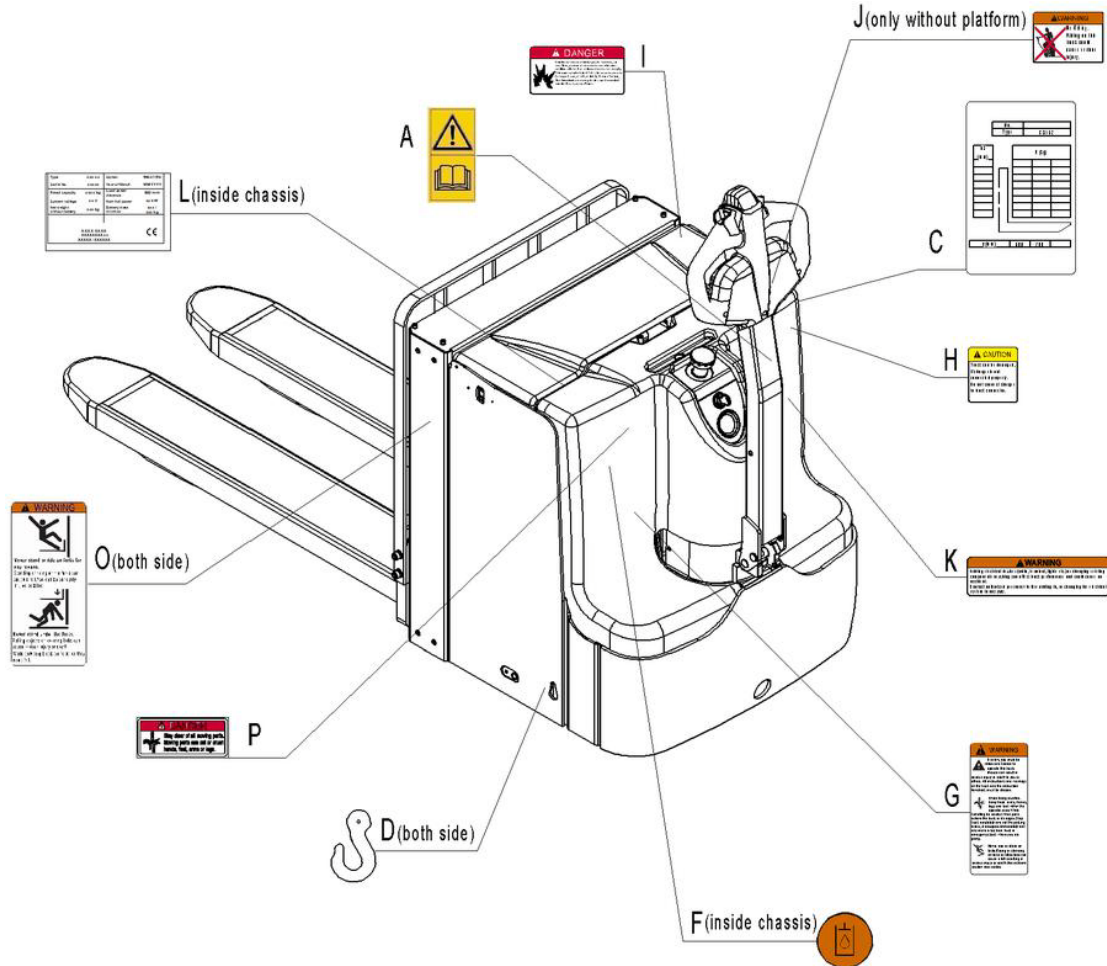


Fig.30 PT 20I Sticker (US)

| No. | Art No. | Description | Qty. | Note |
|-----|------------|---|------|------|
| A | 9000003570 | Sticker to read and follow these instructions | 1 | |
| C | 9000017849 | Residual lift capacity sticker | 1 | |
| D | 9000005967 | Crane hook label | 2 | |
| F | 9000008555 | Filling sticker | 1 | |
| G | 9000003575 | Warning label | 1 | |
| H | 9000003576 | Warning label | 1 | |
| I | 9000003577 | Warning label | 1 | |
| J | 9000003580 | Warning label | 1 | |
| K | 9000003579 | Warning label | 1 | |
| L | 9000017850 | CE sticker | 1 | |
| O | 9000005971 | Warning label | 1 | |
| P | 9000005970 | Warning label | 1 | |

Fig.31 PT 20D stickers (EU)

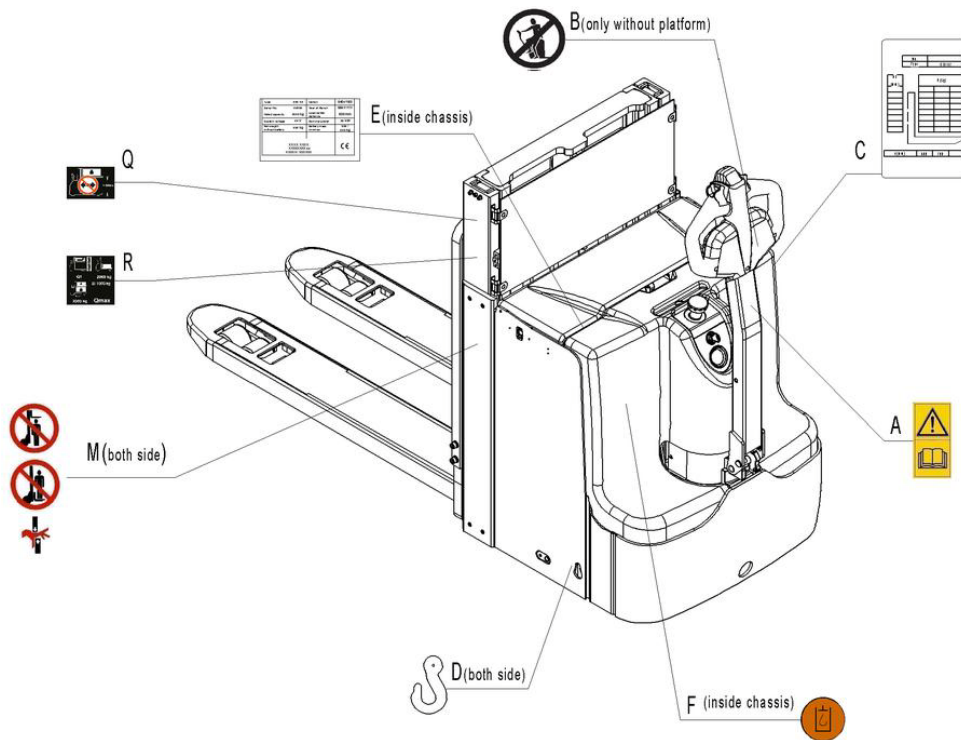


Fig.31 PT 20D Sticker (EU)

| No. | Art No. | Description | Qty. | Note |
|-----|------------|--|------|------|
| A | 900003570 | Sticker to read and follow these instructions | 1 | |
| B | 900003573 | 'No passengers' decal | 1 | |
| C | 9000017849 | Residual lift capacity sticker | 1 | |
| D | 9000005967 | Crane hook label | 2 | |
| E | 9000017850 | CE sticker | 1 | |
| F | 9000008555 | Filling sticker | 1 | |
| M | 9000003923 | Warning sticker: Do not step under or on the forks | 1 | |
| Q | 9000018491 | Warning sticker | 1 | |
| R | 9000018492 | Warning sticker | 1 | |

Fig.32 PT 20D stickers (US)

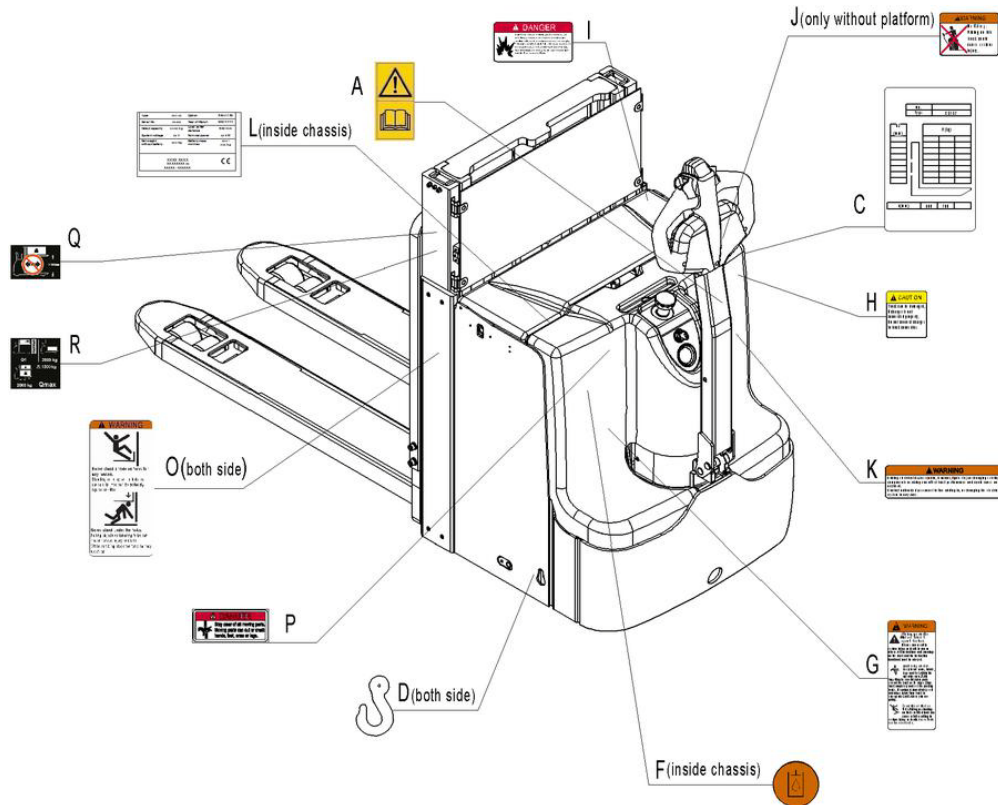


Fig.32 PT 20D Sticker (US)

| No. | Art No. | Description | Qty. | Note |
|-----|------------|---|------|------|
| A | 9000003570 | Sticker to read and follow these instructions | 1 | |
| C | 9000017849 | Residual lift capacity sticker | 1 | |
| D | 9000005967 | Crane hook label | 2 | |
| F | 9000008555 | Filling sticker | 1 | |
| G | 9000003575 | Warning sticker | 1 | |
| H | 9000003576 | Warning sticker | 1 | |
| I | 9000003577 | Warning sticker | 1 | |
| J | 9000003580 | Warning sticker | 1 | |
| K | 9000003579 | Warning sticker | 1 | |
| L | 9000017850 | CE sticker | 1 | |
| O | 9000005971 | Warning sticker | 1 | |
| P | 9000005970 | Warning sticker | 1 | |
| Q | 9000018491 | Warning sticker | 1 | |
| R | 9000018492 | Warning sticker | 1 | |

Easy Worn Parts

| No. | Art No. | Description | Qty. | Fig./Position | Note |
|-----|------------|---------------------------|------|---------------|------------------|
| 1 | 0000027060 | Bearing 6202 | 12 | Fig. 2/4 | Chassis |
| 2 | 0000027005 | Bushing 20X22X12 | 16 | Fig. 2/16 | |
| 3 | 1000413001 | Bushing 20X23X15 | 4 | Fig. 2/18 | |
| 4 | 0000030001 | Grease nipple | 8 | Fig. 2/22 | |
| 5 | 0000013002 | Bushing 20X22X12 | 4 | Fig. 2/28 | |
| 6 | 0000027001 | Bearing 6204 | 4 | Fig. 3/5 | Load roller |
| 7 | 0000030001 | Grease nipple | 2 | Fig. 3/6 | |
| 8 | 9000008332 | Magnetic switch HWK23 | 1 | Fig. 5/6 | Mast |
| 9 | 0000027011 | Bearing 6205 | 2 | Fig. 5/30 | |
| 10 | 9000000794 | Micro switch | 1 | Fig. 5/40 | |
| 11 | 9000000794 | Micro switch | 1 | Fig. 6/10 | |
| 12 | 9000008332 | Magnetic switch HWK23 | 1 | Fig. 6/12 | |
| 13 | 0000027011 | Bearing 6205 | 8 | Fig. 6/27 | Steering wheel |
| 14 | 0000027002 | Bearing 3056205 | 2 | Fig. 14/2 | |
| 15 | 1000413002 | Bushing 12x15x15 | 4 | Fig. 14/9 | |
| 16 | 0000027001 | Bearing 6204 | 4 | Fig. 14/15 | Tiller |
| 17 | 900000832 | 9 interlock switch | 1 | Fig. 15/7 | |
| 18 | 0000013002 | Bushing | 2 | Fig. 15/13 | Cylinder (front) |
| 19 | 9000010180 | Dust ring | 1 | Fig. 19/2 | |
| 20 | 9000010181 | Y ring | 1 | Fig. 19/3 | Cylinder (rear) |
| 21 | 9000009926 | Dust ring 40X48X5/6.5 | 1 | Fig. 20/4 | |
| 22 | 9000009927 | Support ring 40X44X10 | 1 | Fig. 20/3 | |
| 23 | 0000022014 | O rubber seal ring 25x3.1 | 2 | Fig. 20/6 | |
| 24 | 0000022013 | O rubber seal ring 45x3.1 | 1 | Fig. 20/8 | |
| 25 | 9000017912 | Y ring 35X45X6/7 | 1 | Fig. 20/10 | |
| 26 | 9000009926 | Dust ring 40X48X5/6.5 | 1 | Fig. 21/4 | |
| 27 | 9000009927 | Support ring 40X44X10 | 1 | Fig. 21/3 | |
| 28 | 0000022014 | O rubber seal ring 25x3.1 | 2 | Fig. 21/6 | |
| 29 | 0000022013 | O rubber seal ring 45x3.1 | 1 | Fig. 21/8 | |
| 30 | 9000017912 | Y ring 35X45X6/7 | 1 | Fig. 21/10 | |

| | | | | | |
|----|------------|------------------------------|---|------------|--|
| 31 | 9000009926 | Dust ring 40X48X5/6.5 | 1 | Fig. 22/4 | |
| 32 | 9000009927 | Support ring 40X44X10 | 1 | Fig. 22/3 | |
| 33 | 0000022014 | O rubber seal ring 25x3.1 | 2 | Fig. 22/6 | |
| 34 | 0000022013 | O rubber seal ring 45x3.1 | 1 | Fig. 22/8 | |
| 35 | 9000017912 | Y ring 35X45X6/7 | 1 | Fig. 22/10 | |
| 36 | 9000000794 | Micro switch RZ-15GW2S-B3 | 1 | Fig. 24/30 | |
| 37 | 9000008332 | Magnetic switch HWK23 | 1 | Fig. 24/41 | |
| 38 | 9000000794 | Micro switch RZ-15GW2S-B3 | 1 | Fig. 25/31 | |
| 39 | 9000000794 | Micro switch RZ-15GW2S-B3 | 1 | Fig. 26/31 | |
| 40 | 9000008332 | Magnetic switch HWK23 | 1 | Fig. 26/42 | |